

D. CLACRETE

Field Note D2b. On the Enon Formation

Calcrete was formed on the Enon Formation fine deposits, in the Soutpansvlakte Basin (Figure 1) and on the hills around it, as shown in Figures 2 to 13.

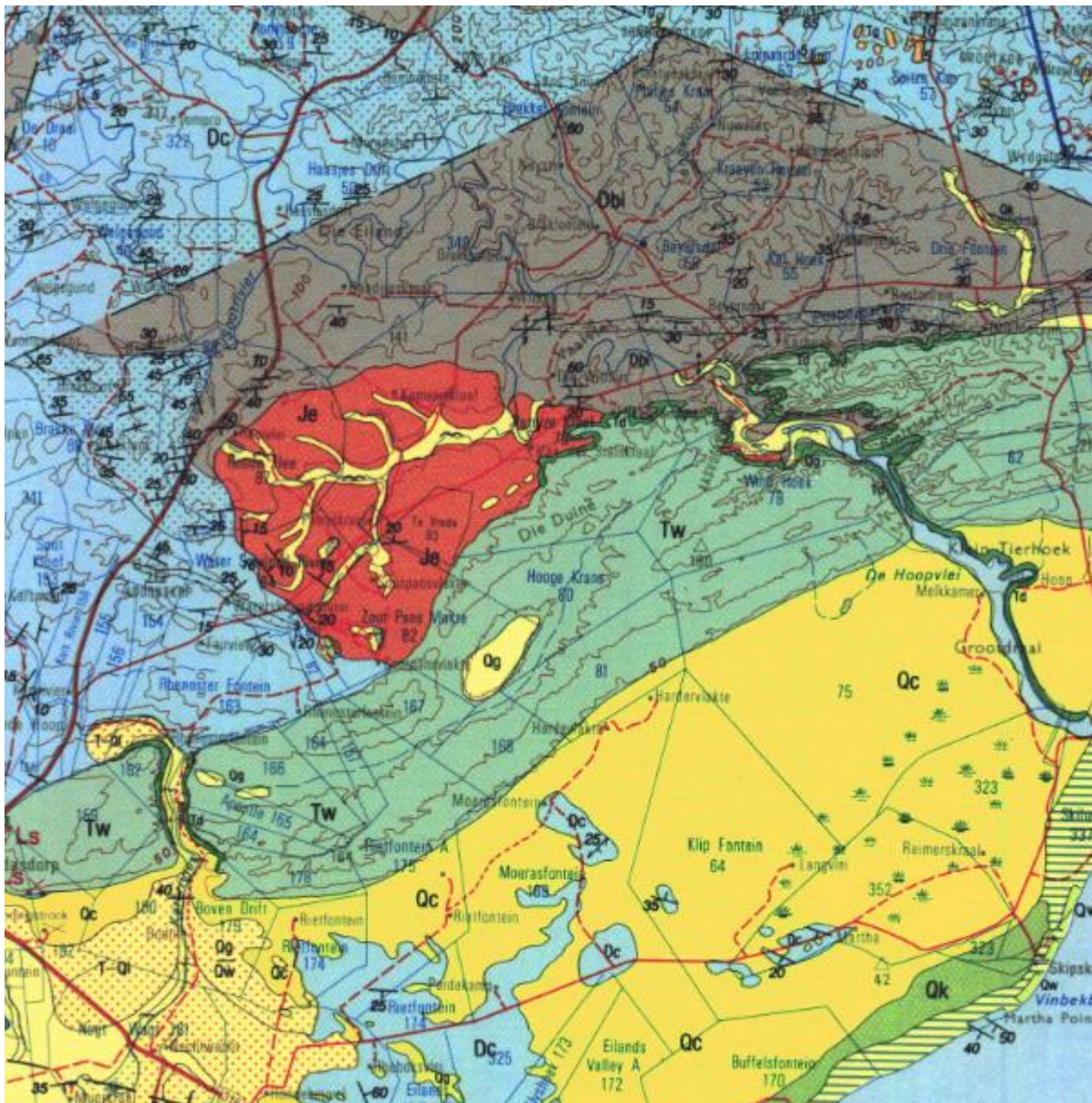


Figure 1. Geology map of part of the Study Area. The red colour represents the Enon Formation sediments (the Soutpansvlakte Basin).

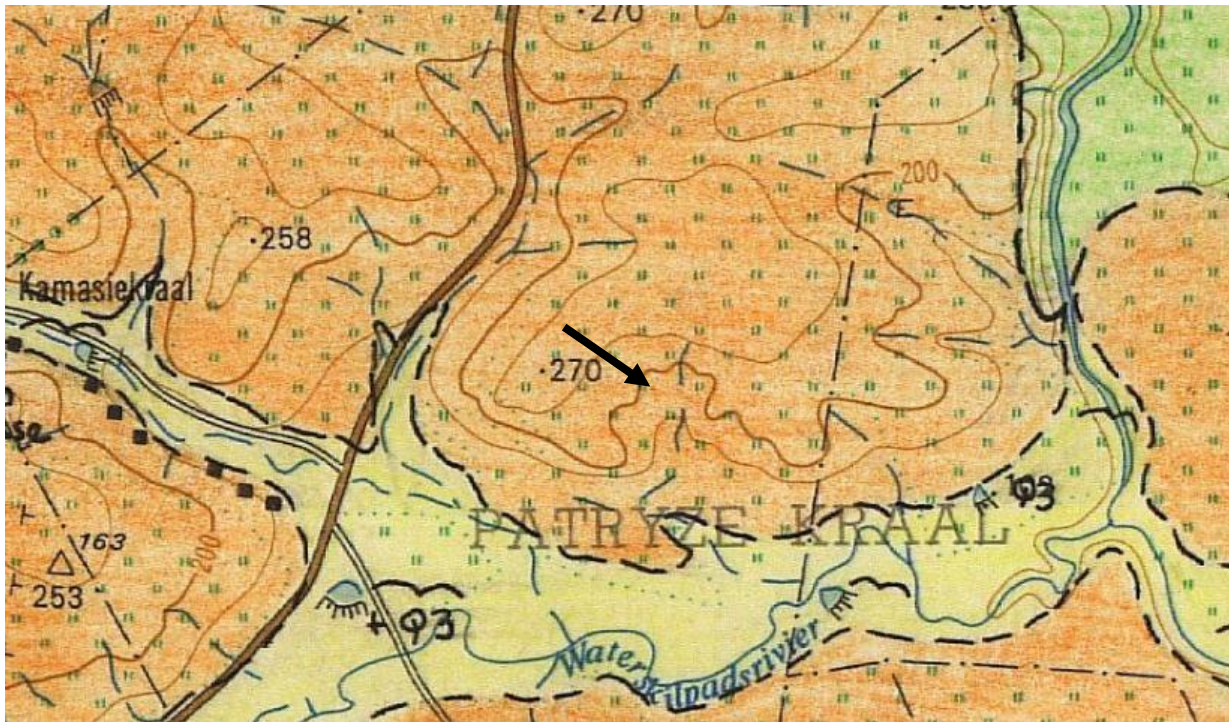


Figure 2. Section of the geology map of the Soutpansvlakte Basin. Arrow points to the area shown in Figure 3.



Figure 3. Satellite image of an area in the northern side of the Soutpansvlakte Basin. The white patches are calcrete over Enon Formation sediments.



Figure 4. Disintegrated calcrete over Enon Formation sediments in the Soutpansvlakte Basin.



Figure 5. Calcrete layer is exposed on a road at the heart of the Soutpansvlakte Basin.



Figure 6. Calcrete patches (arrows) over Enon Formation sediments on a hill slope.



Figure 7. Calcrete layer is exposed on Enon Formation in a road near the Soutpansvlakte Basin.



Figure 8. Thick Calcrete layer on Enon Formation deposits in a ravine in the Soutpansvlakte Basin.

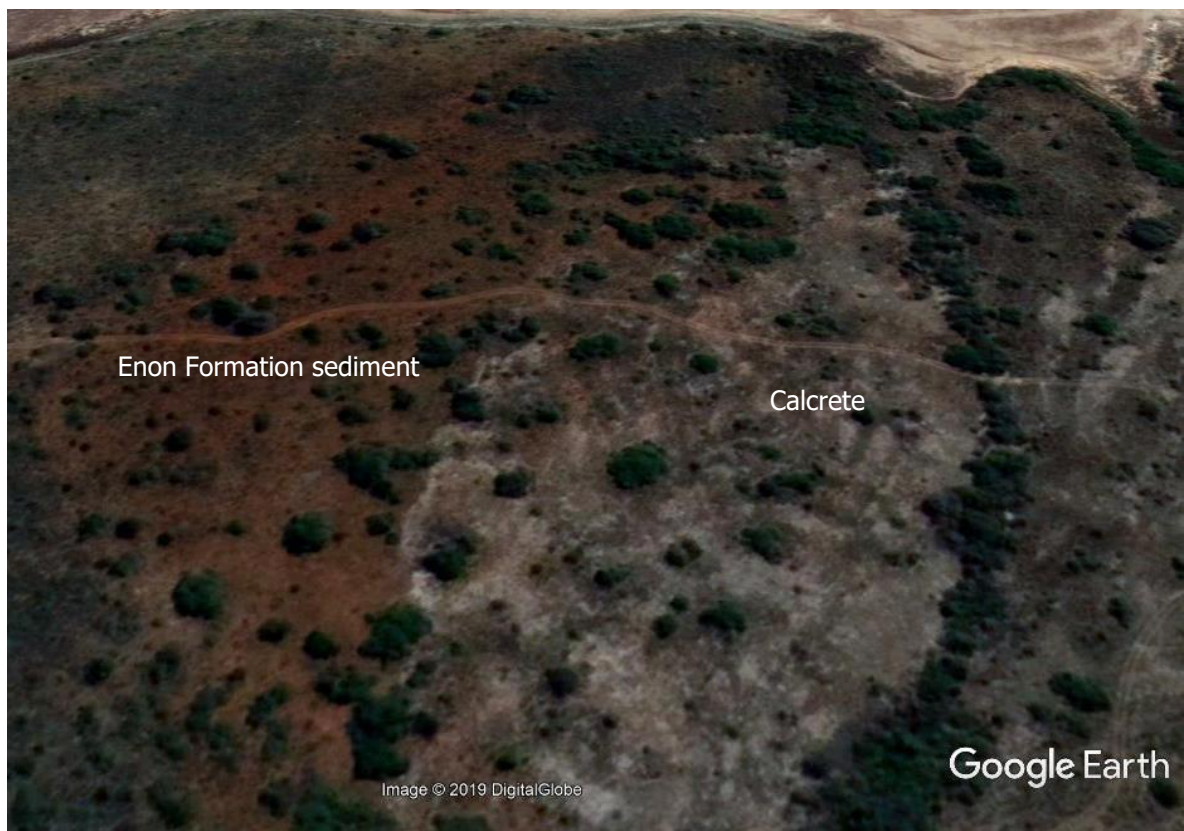


Figure 9. Satellite image of calcrete cover on Enon Formation deposit.



Figure 10. Thin calcrete layers on Enon Formation deposits.



Figure 11. Calcrete lumps on Enon Formation deposits.



Figure 12. Thick (>2 m) calcrete over Enon Formation deposits, forming a high in a field at the heart of the Soutpansvlakte Basin.



Figure 13. Closer look at the Calcrete shown in Figure 12.