

## K. WEST VALLEYS

### Field Note K4. The Rietfontein Valley

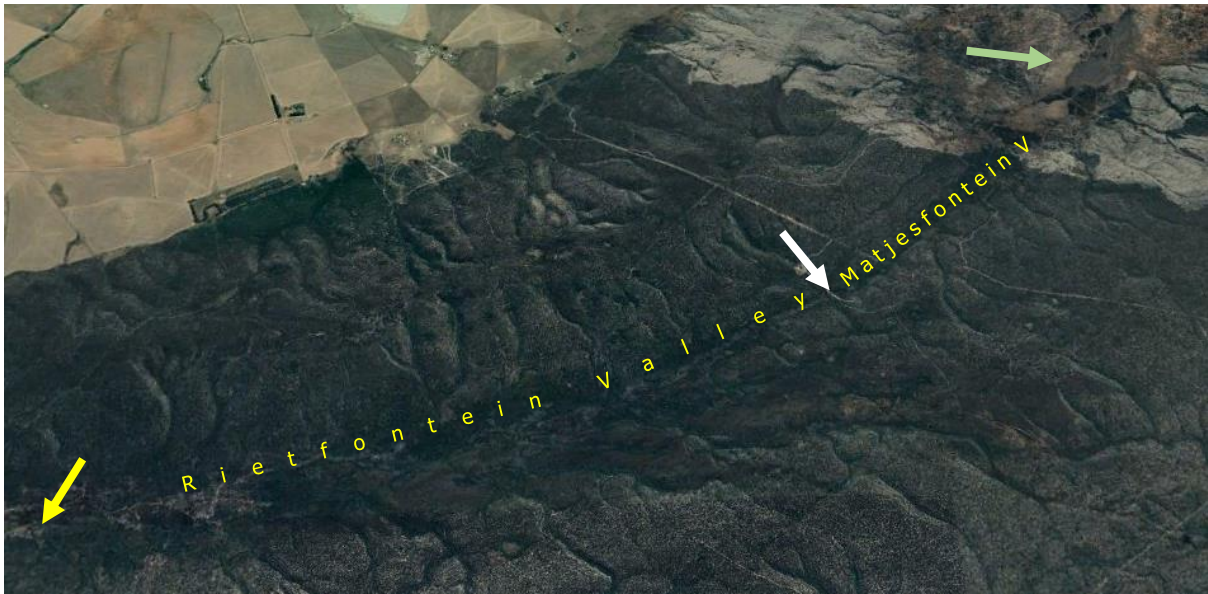
There are seven valleys in the area between the Kars River in the west and the De Hoop Vlei in the east. They form a continuous line of valleys, separating the Outer West Hard Dunes from the Inner West Hard Dunes – the two sub-parallel ranges, west of De Hoop Vlei.

These valleys are, from west to east: the West Renoster Valley, the East Renoster Valley, the Rietfontein Valley, the Matjesfontein Valley, the Ou Werf Valley, the Hooge Krans Valley and the Patryze Valley (Figure 1). [The valley names were given by the author after the names of the (old) farms on which they are located, or adjacent farms]. Some of the valleys are enclosed; none of them drains into a river. The access to the valleys is only possible from the farms to the west of the Outer West Hard Dunes.

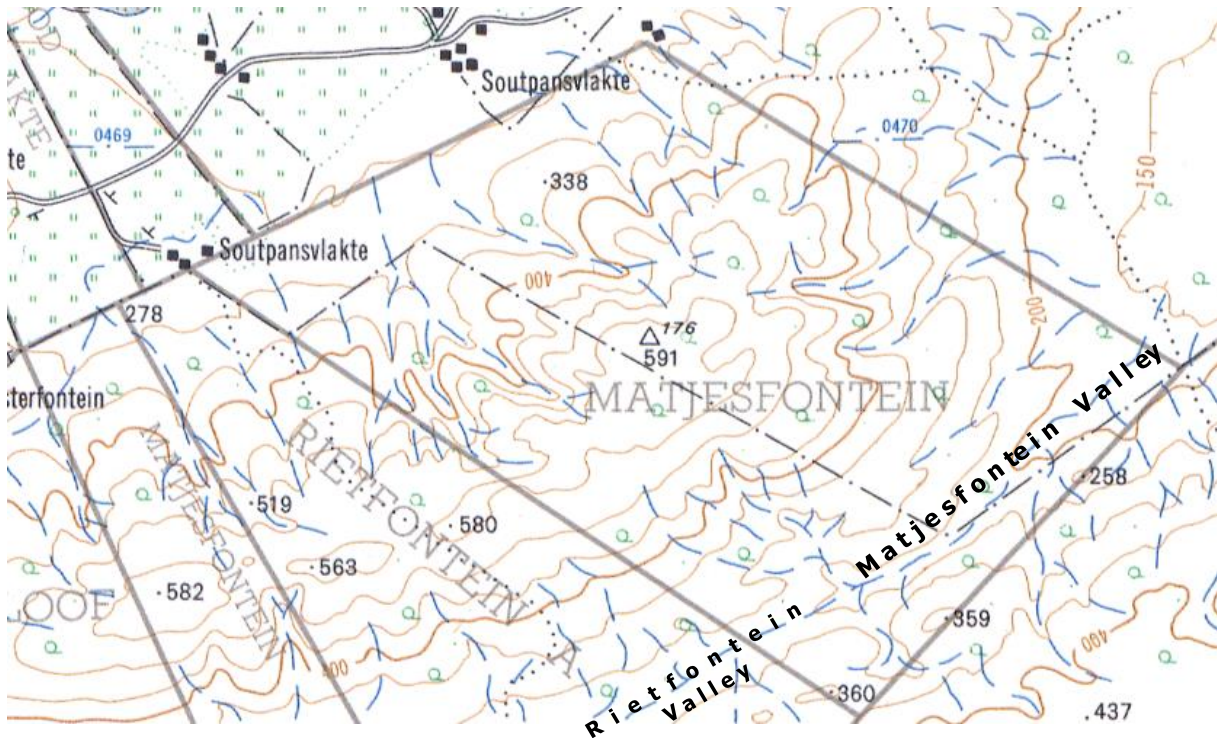
The valleys are briefly described below and in detail in the following field notes.



**Figure 1. Satellite image of the area west of De Hoop Vlei, showing the West Hard Dunes ranges and the valleys between them [all names were given by the author]. Arrows point on: green - Kars River; white – De Hoop Vlei. Valleys: 1 – West Renoster Valley; 2- East Renoster Valley; 3 – Rietfontein Valley; 4 – Matjesfontein Valley; 5 - Ou Werf Valley; 6 - Hooge Krans Valley; 7 - Patryze Valley. The total length of the valleys is ~20 km.**



**Figure 2. Satellite image of the Rietfontein and Matjesfontein Valleys, which connect the Renoster Valleys in the southwest with the Ou Werf Valley in the northeast. The Rietfontein Valley starts at the watershed, ~90 m asl (white arrow), and goes ~4 km southwestwardly to the East Renoster Valley (yellow arrow). The Matjesfontein Valley starts at the watershed and goes ~2 km northeastwardly to the Ou Werf Valley (green arrow).**



**Figure 3. Topographic map from 1981, showing the names of the original farms on which the valleys are situated.**

The access to the Rietfontein Valley is from the East Renoster Valley (Figure 5).



**Figure 4. Satellite image of the Rietfontein Valley, into which there is vehicle access road (arrow) from the East Renoster Valley.**

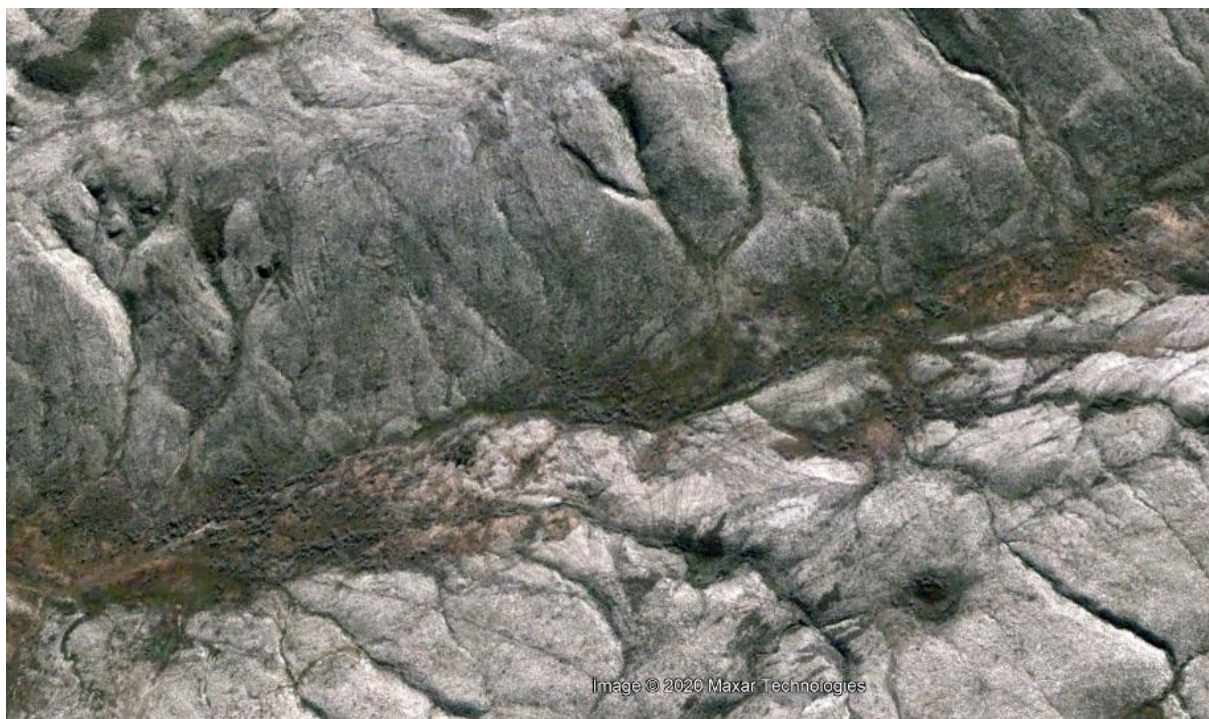
The floor of the valley consists of red sand (figures 5 to 7)



**Figure 5. Satellite image of the upper part of the Rietfontein Valley. The watershed point is west of the road (arrow).**



**Figure 6. Satellite image of the middle part of the Rietfontein Valley. The valley floor consists of red sand.**



**Figure 7. Satellite image of the west part of the Rietfontein Valley. The valley floor consists of red sand.**

Like the rest of the West Valleys, the Rietfontein Valley was not formed by erosion. See discussion in Chapter W.