

K. WEST VALLEYS

Field Note K6a. The Ou Werf Valley - Geography

There are seven valleys in the area between the Kars River in the west and the De Hoop Vlei in the east. They form a continuous line of valleys, separating the Outer West Hard Dunes from the Inner West Hard Dunes – the two sub-parallel ranges, west of De Hoop Vlei.

These valleys are, from west to east: the West Renoster Valley, the East Renoster Valley, the Rietfontein Valley, the Matjesfontein Valley, the Ou Werf Valley, the Hooge Krans Valley and the Patryze Valley (Figure 1). [The valley names were given by the author after the names of the (old) farms on which they are located, or adjacent farms]. Some of the valleys are enclosed; none of them drains into a river. The access to the valleys is only possible from the farms to the west of the Outer West Hard Dunes.

The valleys are briefly described below and in detail in the following field notes.



Figure 1. Satellite image of the area west of De Hoop Vlei, showing the West Hard Dunes ranges and the valleys between them [all names were given by the author]. Arrows point on: green - Kars River; white – De Hoop Vlei. Valleys: 1 – West Renoster Valley; 2- East Renoster Valley; 3 – Rietfontein Valley; 4 – Matjesfontein Valley; 5 - Ou Werf Valley; 6 - Hooge Krans Valley; 7 - Patryze Valley. The total length of the valleys is ~20 km.

The Ou Werf Valley is surrounded by high hills (Figure 2). The name 'Ou Werf Valley' (also spelt Ouwerf, Old Yard) was given after an old farm with this name, now in ruins, in the south part of the valley (Figure 3) (see Field Note K4g). As the valley borders on the southeast with the Denel Overberg Test Range, there is no access to this valley from the southeast.

A cluster of small houses, huts and caravans and a wind-pump borehole, is situated at the south part of the valley, eastward from the Ou Werf ruins (Figures 4 and 5).

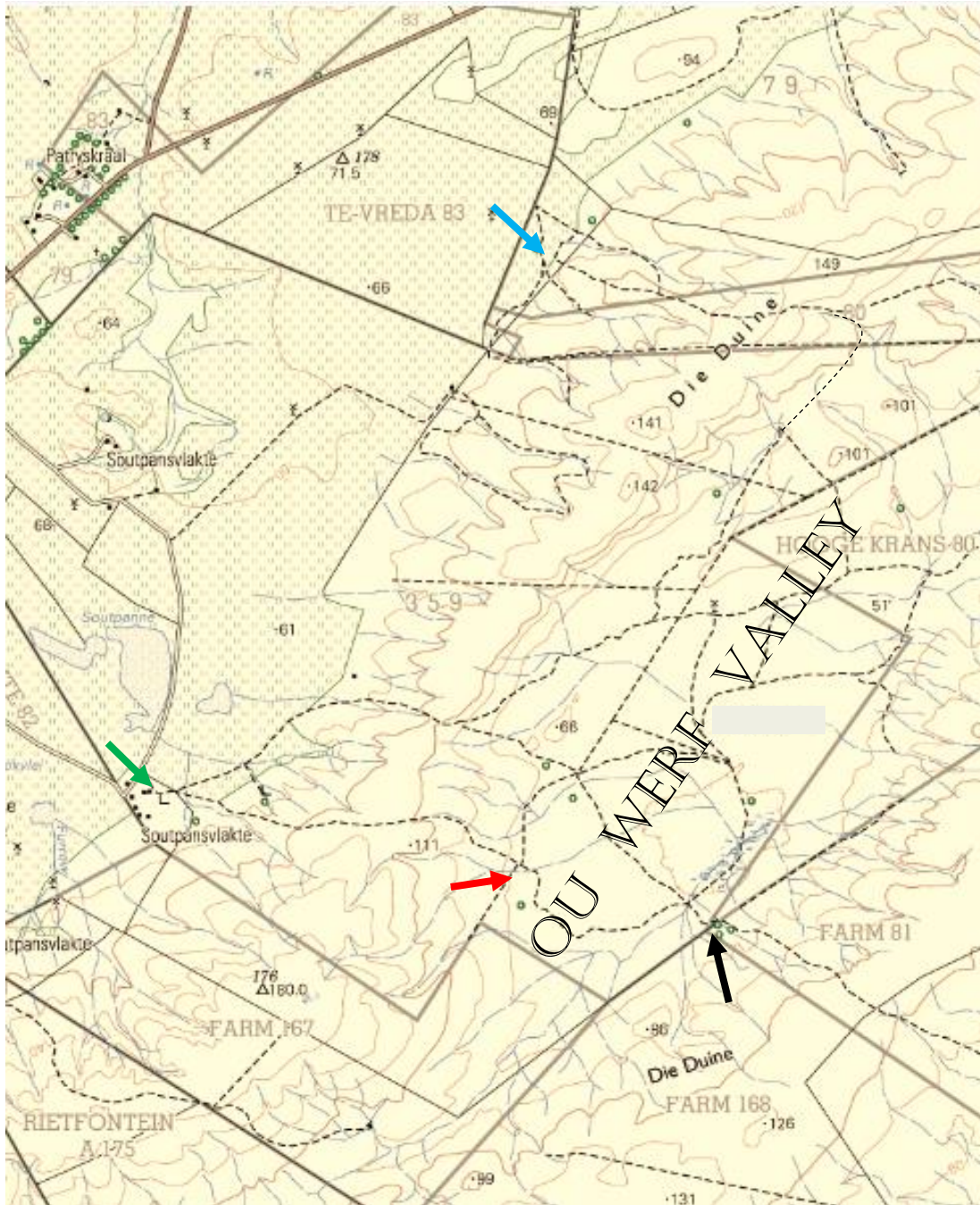


Figure 2. Topographic map of the Ou Werf Valley and the farms around it. Arrows point on: Red – Ou Werf Farm ruins; black – hut and caravan cluster; green – start of roads to the valley (for bakkies only) from the southwest; blue – start of road from the northwest (for roads see also Figures 6 and 7).



Figure 3. Some of the Ou Werf Farm ruins.



Figure 4. Huts and caravans in the southeast of the valley. View from the west.



Figure 5. Closer view (from the southwest) of the hut and caravan cluster shown in Figure 4.

The valley can be accessed (by bakkies only) from the northwest, via the Hooge Krans Valley (Figure 6) and from the southwest (Figure 7). The roads are very rugged on the hills and of deep, loose sand on the floor of the valley.

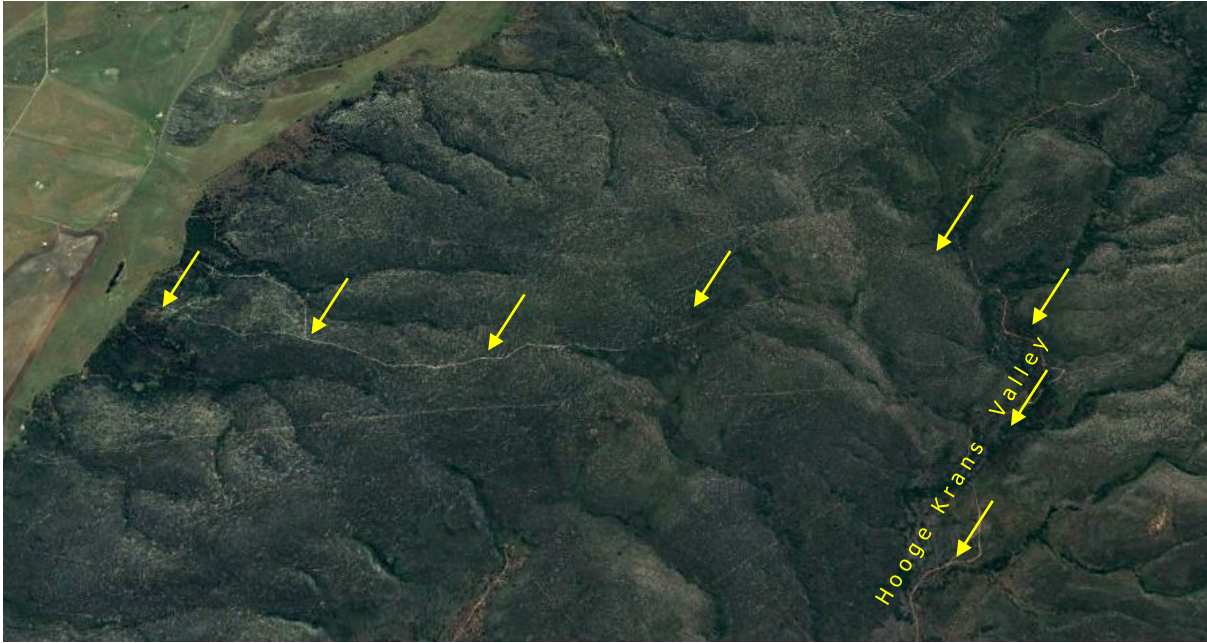


Figure 6. The road from Patryskraal Farm (yellow arrows) to the Ou Werf Valley via the Hooge Krans Valley.



Figure 7. The roads from Soutpansvlakte Farm to the southern part of the Ou Werf Valley: the north road (white arrows) and the south road (yellow arrows).