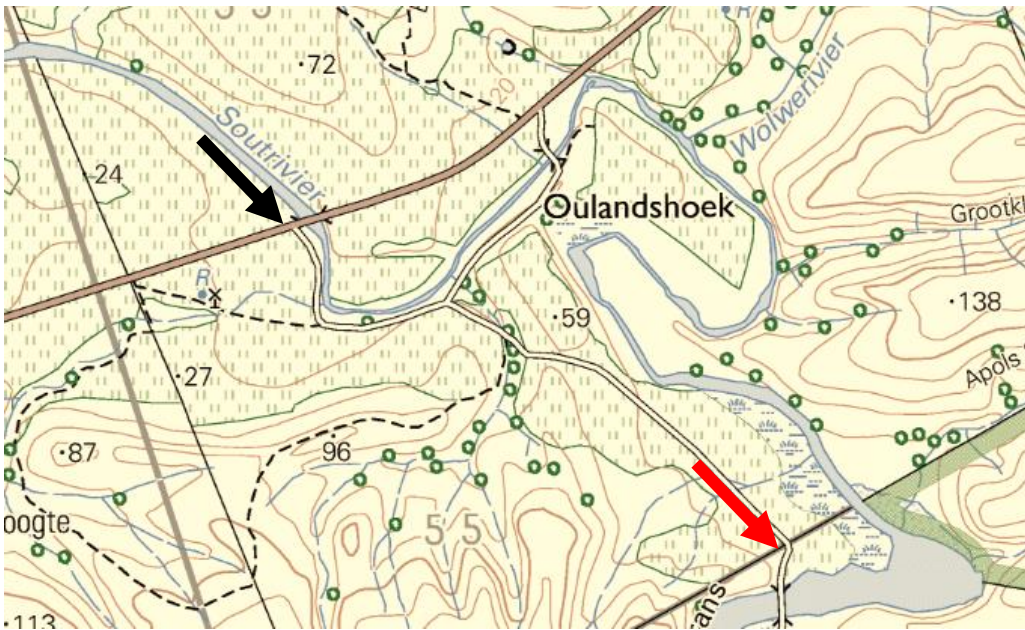


**M. SALT RIVER GORGE**

**Field note M2. Roads and causeways**

**Roads**

The road to the Salt River Gorge starts at the gravel road from Bredasdorp to Potberg turn-off, just before the road goes over the Salt River (Figure 1). There are roads on the south and on the north banks of the gorge and a road into Koleskloof (Figures 2, 3 and 4).



**Figure 1. The road to the Salt River Gorge starts at a cattle gate just before the road goes over the river (black arrow). Red arrow points to the cattle gate to the gorge.**



**Figure 2. Topography map showing the north bank road (red arrow) and the south bank road (black arrow).**





**Figure 3. Satellite image showing the east part of the south bank road (arrows).**



**Figure 4. Satellite image showing the roads inside Koleskloof (arrows).**



### Causeways

There are three causeways over the Salt River within the Salt River Gorge. The causeways are exposed most of the time but submerged in years of very good rains (Figures 5, 6 and 7).

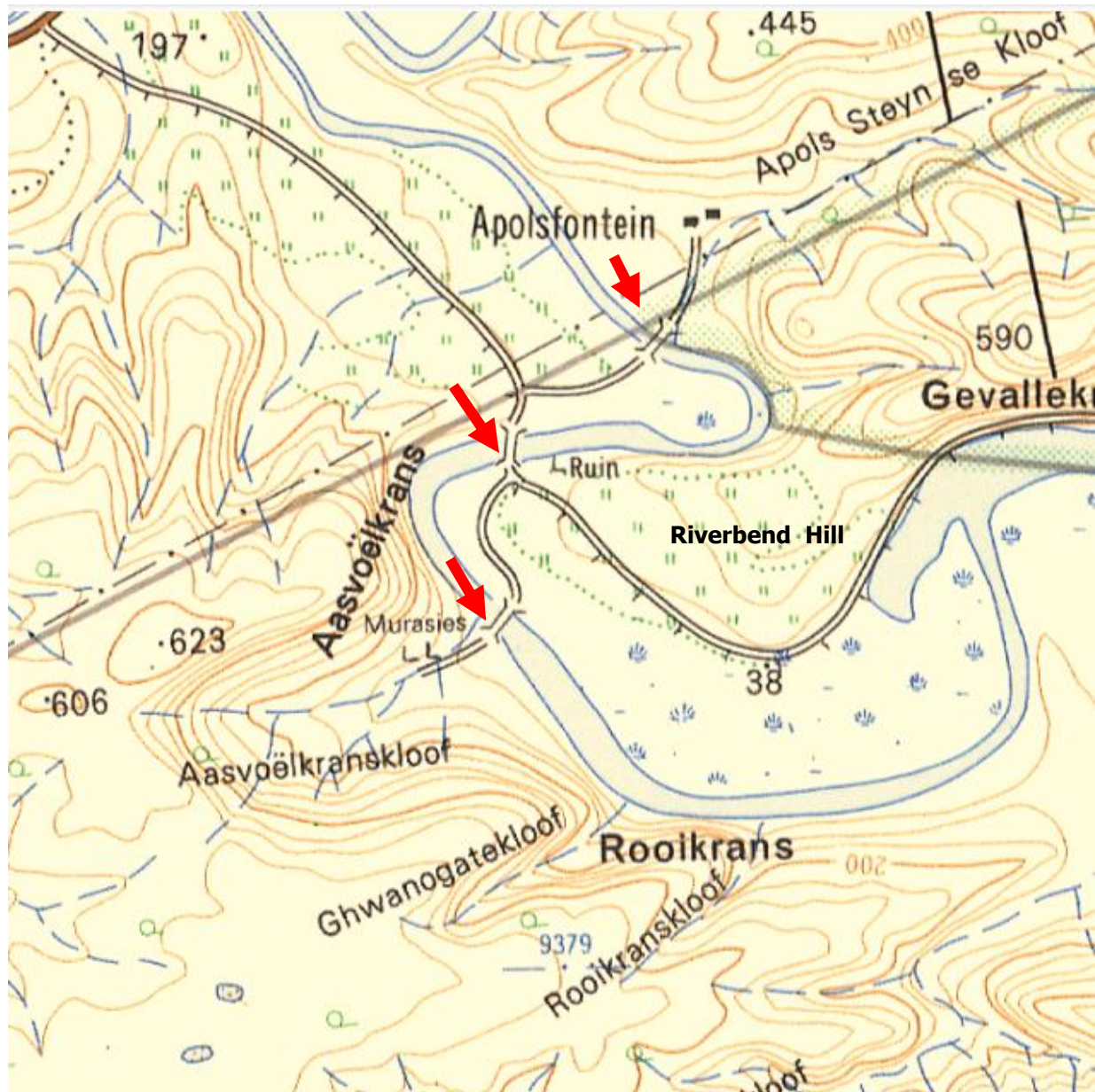


Figure 5. Topography map from 1942, showing the three causeways (arrows). The name Riverbend Hill was given by the author.



Figure 6. Satellite image of part of the Salt River Gorge from June 2018. The roads and the causeways are exposed.

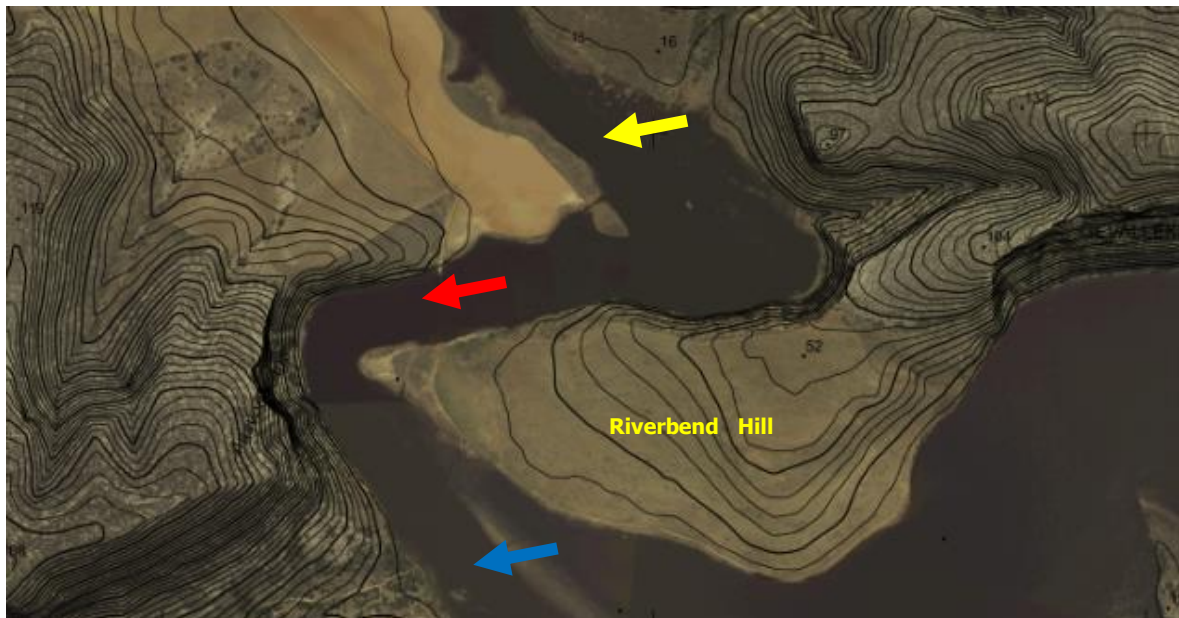


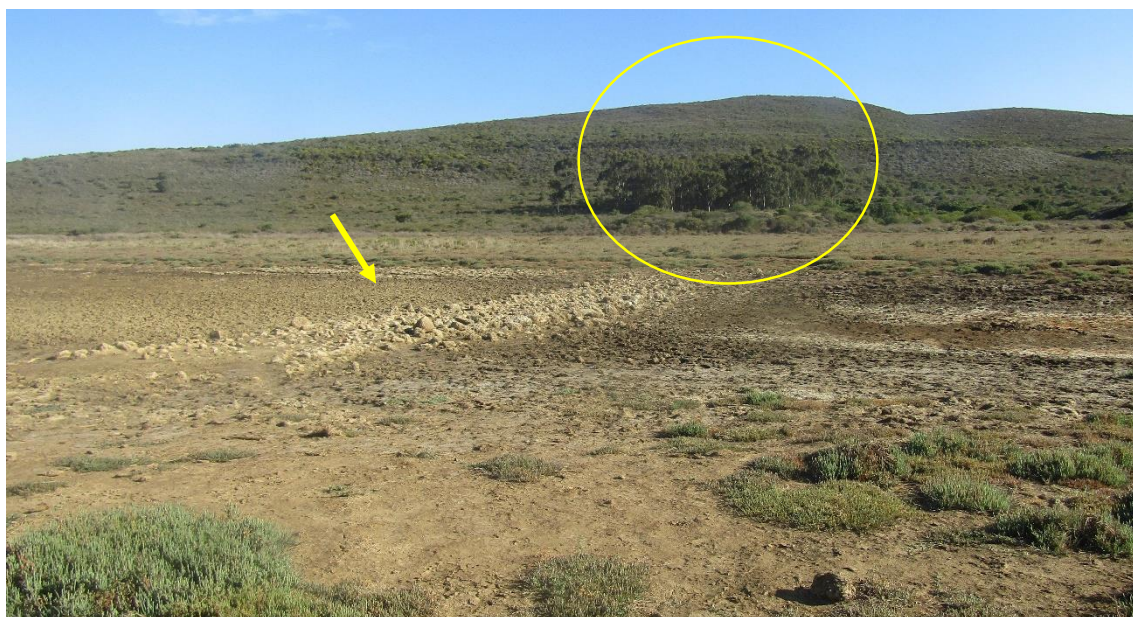
Figure 7. Topography map of the west side of the Windhoek Gorge. The causeways and the roads on the banks are submerged. Arrows: yellow - Apolsfontein rocks causeway; red – concrete causeway; blue – Koleskloof rocks causeway.



The following figures are closer looks at the causeways: the Apolsfontein rocks causeway (Figures 8 and 9), the concrete causeway (Figures 10 and 11) and the Kloeskloof rocks causeway (Figures 12 and 13).



**Figure 8. Satellite image showing the Apolsfontein rocks causeway (arrow), about 30 m long. Circle indicates the location of Apolsfontein (part of the historic Kathoek Farm).**



**Figure 9. The Apolsfontein rocks causeway (arrow). It led to the (now abandoned and in ruin) buildings of Apolsfontein (circle), the south part of the historic Kathoek Farm.**





**Figure 10. The concrete causeway. View to the southwest from the Riverbend Hill. (It was built during the 1950s next to the old, rock causeway; Figure 11)**



**Figure 11. The concrete causeway is about 85 m long. View to the south. The old, rocks causeway can be seen to the right (west) side of the new one. The riverbed is ~8 m above sealevel and the top of the causeway is ~2 m above the riverbed.**





**Figure 12. The rocks causeway over the Salt River, leading into Koleskloof, partially submerged. View to the west-southwest, into Koleskloof.**



**Figure 13. The exposed rocks causeway over the Salt River, leading into Koleskloof. View to the west-southwest, into Koleskloof.**