

CHAPTER S. SHALE HILLS

Field Note S5c. Mines at Hill 254

The clays in the Shale Hills were mined decades ago, in open-cast and underground mines. Some of the mines are marked on the geology map. All the mines have been abandoned. The red clay mines are described from west to east (Field Notes S5a to S5d), then the white clay (kaolin) mines (Field Note S5e) and lastly the salt mines on the south bank of the Breede River (Field Note S5f).

There are four red clay mines in the Shale Hills area (Within the Study Area) (Figure 1).

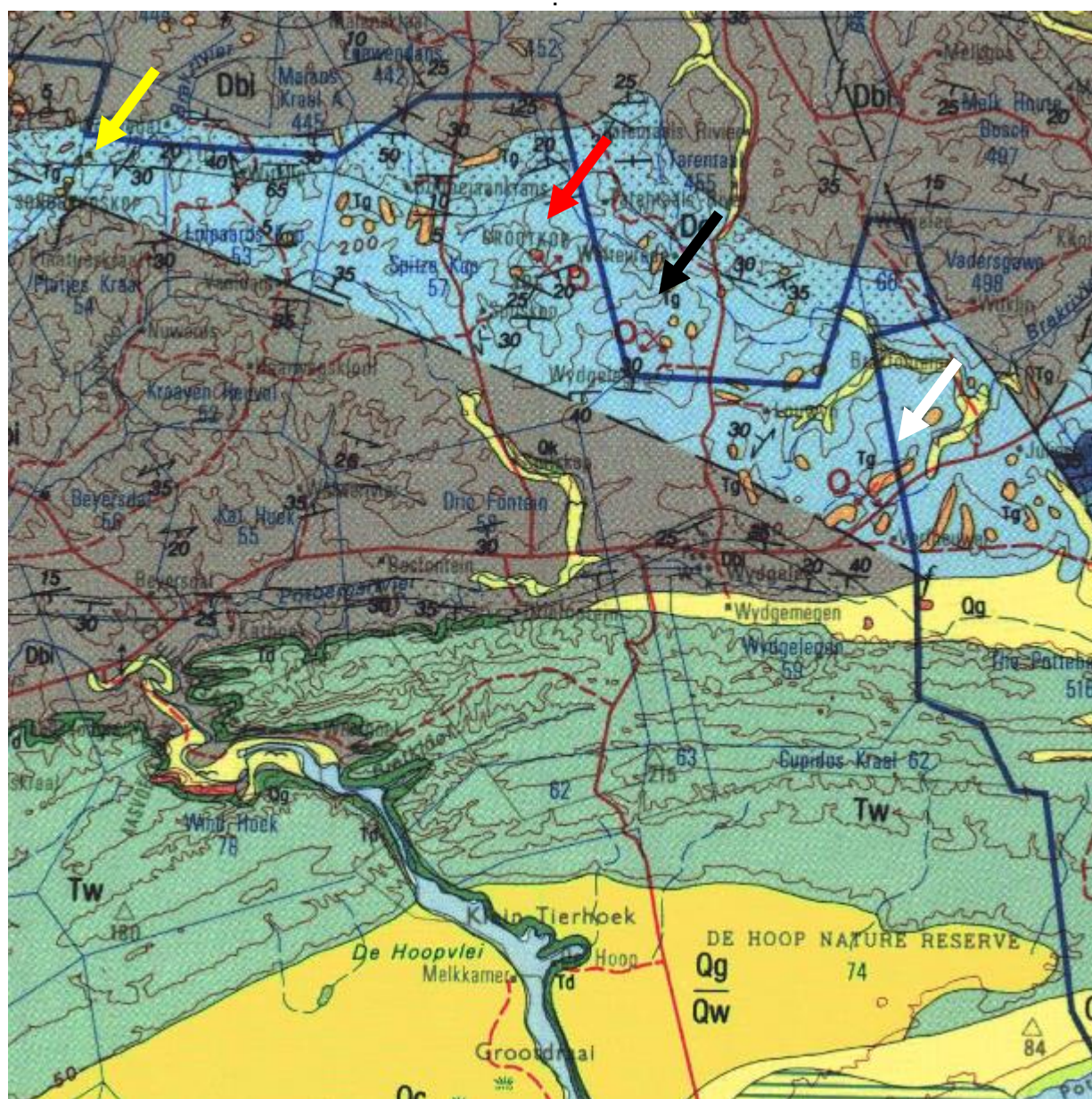


Figure 1. Geology map of part of the Shale Hills north of De Hoop Vlei, showing mine locations (arrows, from west to east): yellow – Sonderkoskop; red – Grootkop and Hill 288; black – Hill 254; white – Verfheuwel.

This Field Note is about the clay mines at Hill 254 (name given by the author).



Hill 254 is located ~4.5 km north of Wydgeleë (Ouplaas) (Figures 2 and 3).

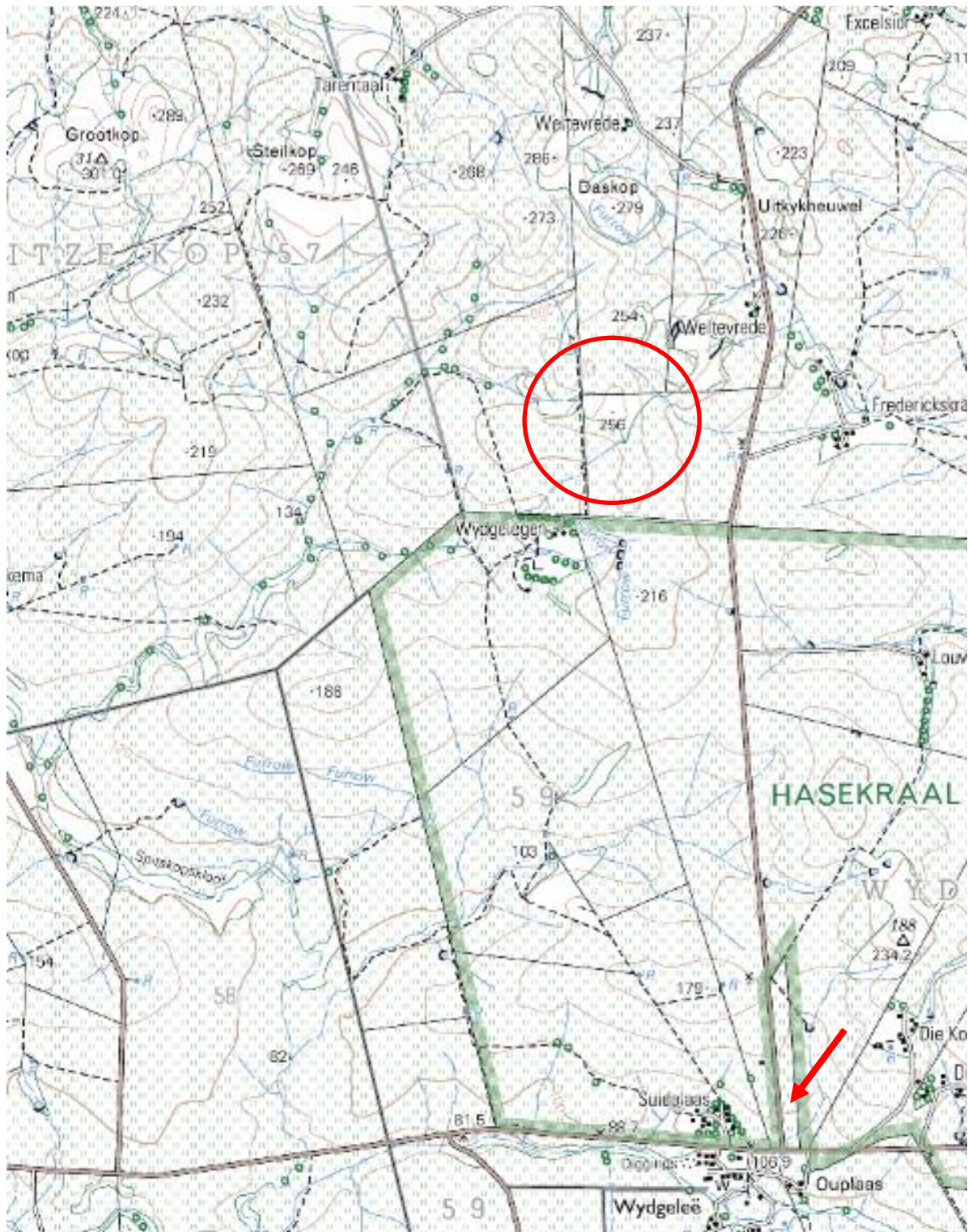


Figure 2. Topography map of the area north of Wygeleë (arrow). Hill 254 (256 on this map) is within the circle.

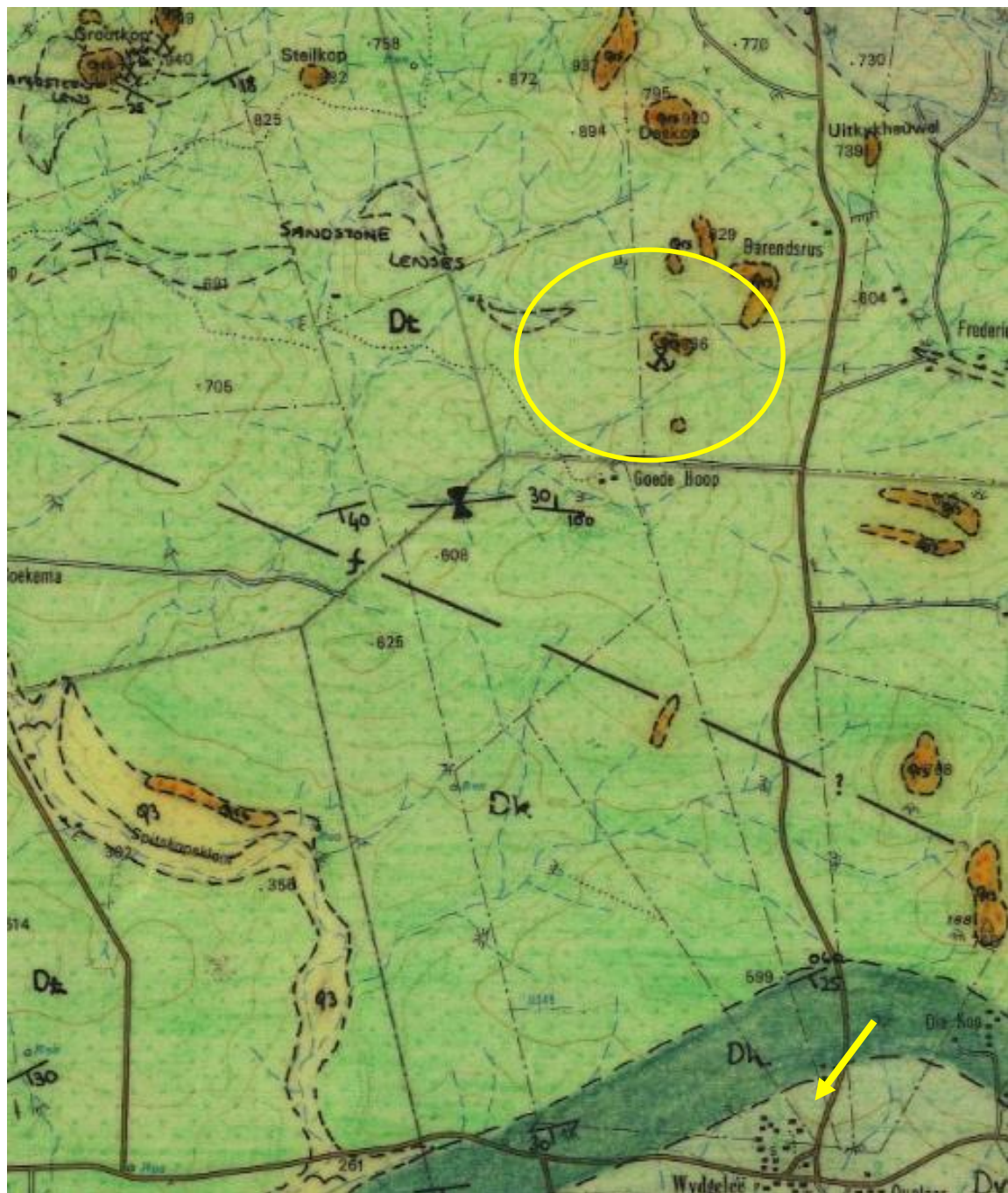


Figure 3. Geology map (1984; elevations in feet) of the area shown in Figure 2. Hill 254 is within the circle. Arrow points to Wydgeleë. Green areas are shales. The orange patches are silcrete (and in places ferricrete) capping.

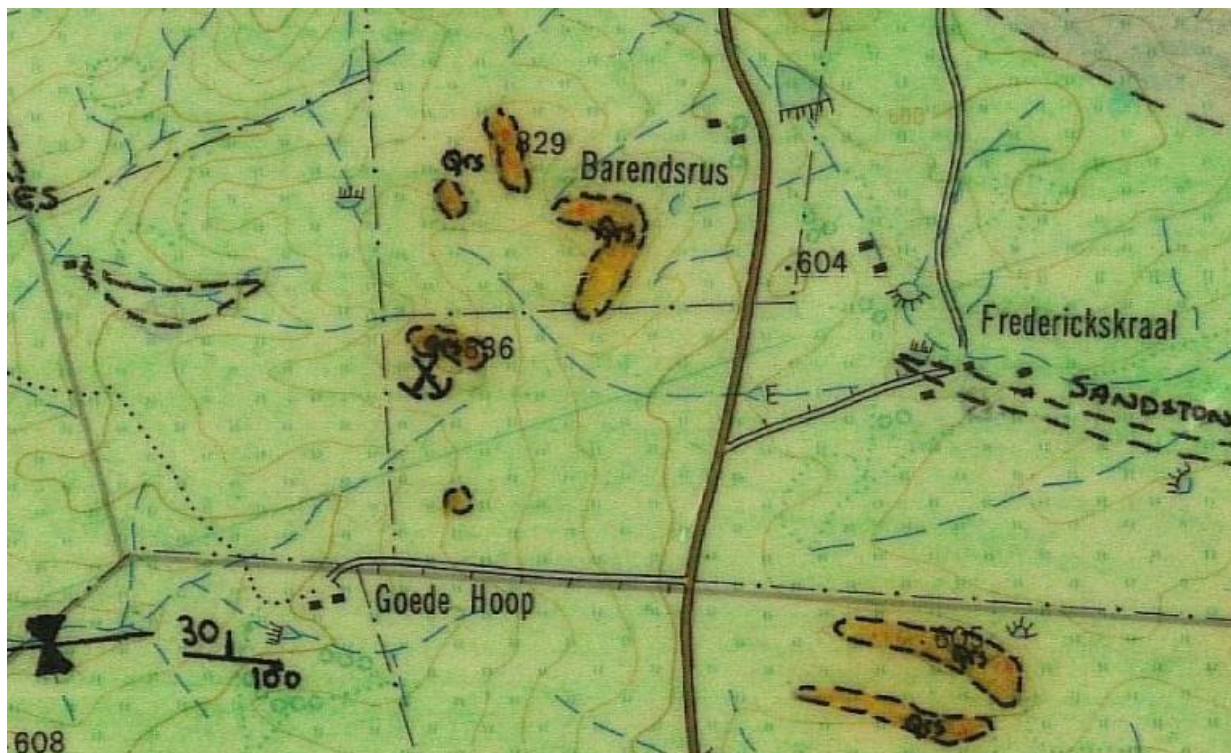


Figure 4. Enlargement of the area encircled in Figures 2 and 3. Note the mine symbol:

Mine not in production 

Hill 254 peaks 254 m above sealevel (Figure 5).

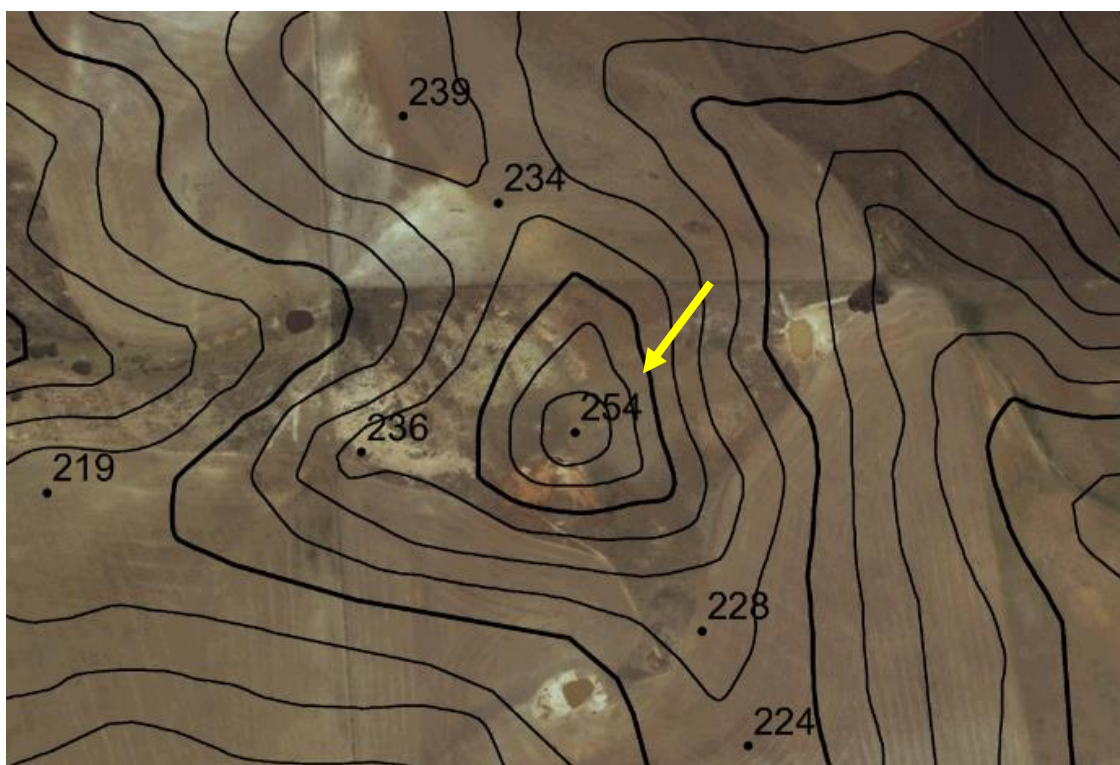


Figure 5. Topography map of Hill 254 (arrow).

Hill 254 is capped with silcrete (see Chapter C for silcrete) (Figures 6 and 7).



Figure 6. The silcrete cap of Hill 254. The red clay mine is seen on the right. View from the west.



Figure 7. The silcrete cap of Hill 254

The mines at Hill 254 are of the open-cast type (red clay below the summit, white clay at the bottom of the slope), can be seen on satellite images (Figures 8 and 9).



Figure 8. Satellite image of Hill 254. The red and white clay mines are indicated by arrows.



Figure 9. Satellite image of Hill 254. The red clay mine is just below the silcrete cap (arrow).

The red clay and the white clay mines are on the south flank of Hill 254 (Figures 10 and 11).

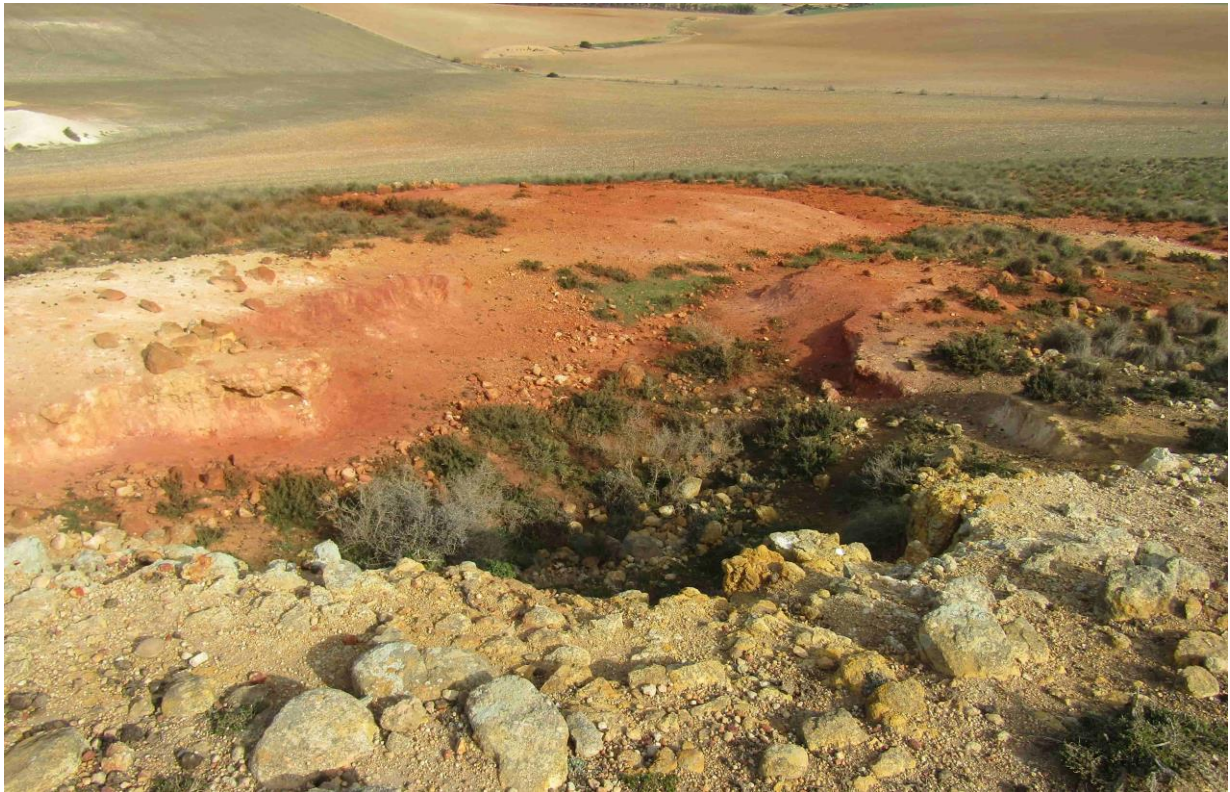


Figure 10. The red clay mine below the peak of Hill 254.



Figure 11. The white clay mine at the foot of Hill 254.