

B. NATURE RESERVES

Field Note B1. Overview

There are several private and public nature reserves in the Study Area (Figure 1). The nature reserves are described briefly in the following Field Notes. The material, which is contained in the Field Notes about public nature reserves was taken from the nature reserves' publications and websites. Readers can find more information on the public nature reserves on the Internet. Very little information is publicly available on the private nature reserves.



Figure 1. Satellite image showing the confines of the Study Area and the nature reserves and conservatories which are located within its confines. They are (from the southwest to the northeast): ANR – Andrewsfield Nature Reserve (private); De Mond Nature Reserve Complex (Cape Nature) which consists of three reserves: SVNR – Soetendals Vlei Nature Reserve; DMFR – De Mond Forest Reserve and WKNR – Waenhuiskrans Nature Reserve; HRNR - Heunings River Nature Reserve (private); HBNR – Heuninberg Nature Reserve (municipal); AMT – Ancient Milkwood Tree national monument (private); DOTR – Denel Overberg Test Range; VRNR – Vogel Revier (*German spelling*) Nature Reserve (private); HRR – Haarwegskloof Renosterveld Reserve (private); HKNR – Hasekraal Nature Reserve (private); DHNR – De Hoop Nature Reserve (CapeNature); DHMPA – De Hoop Marine Protected Area (CapeNature); and SSNR – San Sebastian Nature Reserve (private). The ANP – Agulhas National Park – is outside the Study Area (Figure 2).

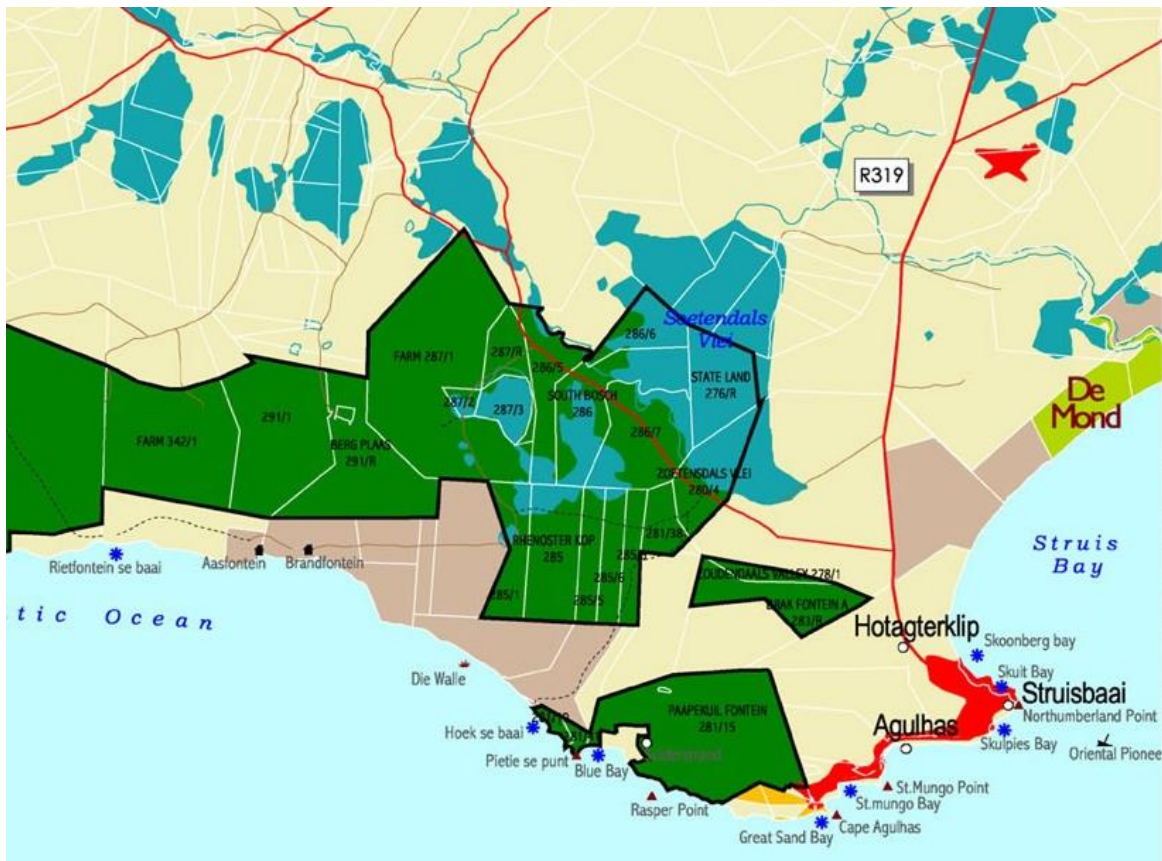


Figure 2. Map of the Agulhas National Park, which is outside the Study Area.

The nature reserves are briefly described in the following Field Notes, for general knowledge and to make readers familiar with the area:

Public nature reserves

- a. De Mond Nature Reserve
- b. Soetendals Vlei Nature Reserve
- c. Waenhuiskruns Nature Reserve
- d. Heuninberg Nature Reserve
- e. De Hoop Nature Reserve and Marine Protected Area

Private nature reserves

- a. Andrewsfield Nature Reserve
- b. Heunings River Nature Reserve
- c. Ancient Giant Milkwood (National monument)
- d. Vogel Revier Nature Reserve
- e. Haarwegskloof Renosterveld Reserve
- f. Hasekraal Nature Reserve
- g. San Sebastian Nature Reserve

Denel Overberg Test Range

Bredasdorp Wreck Museum

[This Website is not a guide to these reserves (or to any site or feature in the Study Area, for this matter) and it does not provide any tips for travellers].