

D. CLACRETE

Field Note D2b. On the Enon Formation

Calcrete was formed on the Enon Formation fine deposits, in the Soutpansvlakte Basin (Figure 1) and on the hills around it, as shown in Figures 2 to 11.

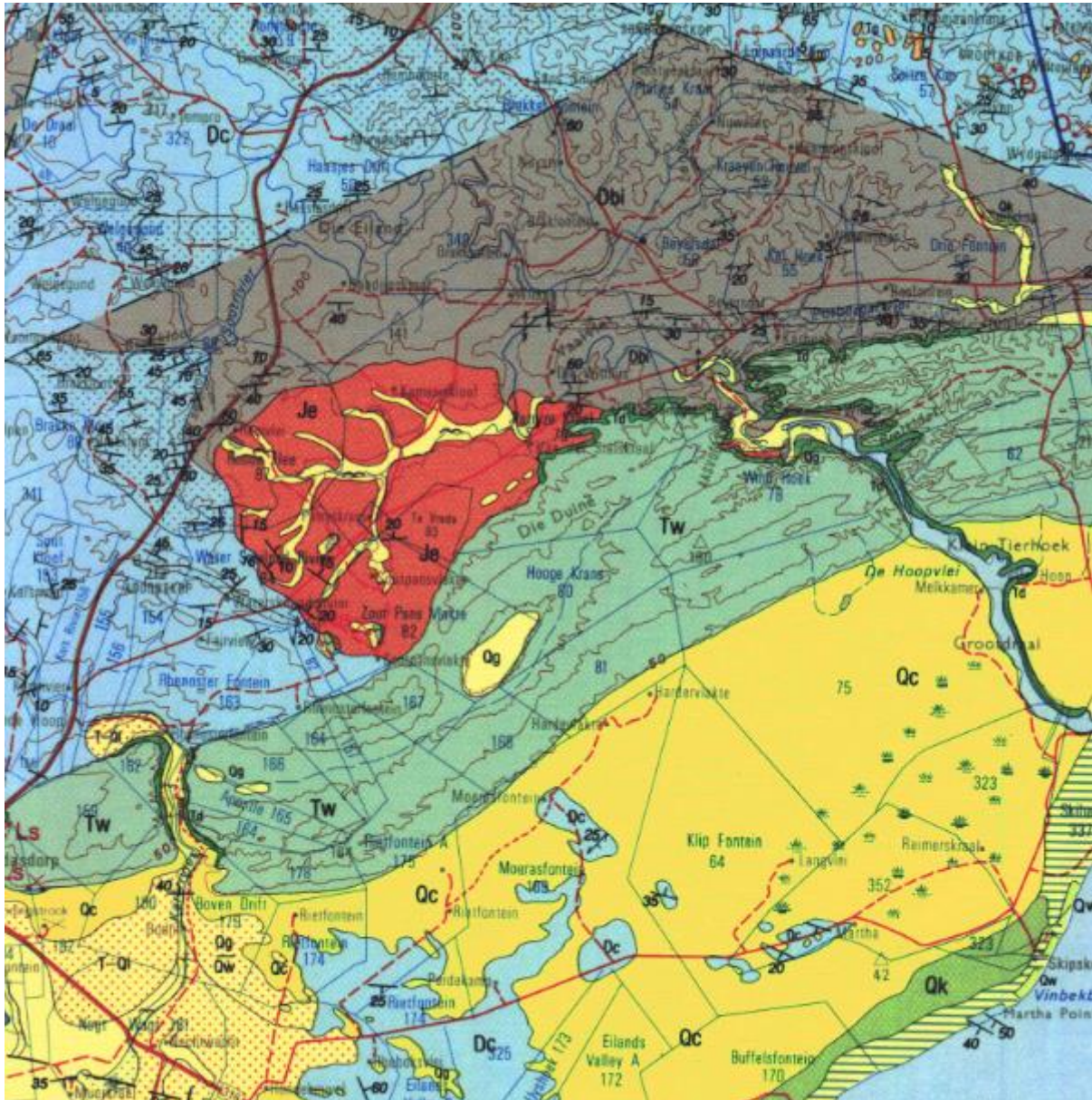


Figure 1. Geology map of part of the Study Area. The red colour represents the Enon Formation sediments (the Soutpansvlakte Basin).



Figure 2. Disintegrated calcrete over Enon Formation sediments in the Soutpansvlakte Basin.



Figure 3. Calcrete layer is exposed on a road at the heart of the Soutpansvlakte Basin.



Figure 4. Calcrete patches (arrows) over Enon Formation sediments on a hill slope.



Figure 5. Calcrete layer is exposed on Enon Formation in a road near the Soutpansvlakte Basin.



Figure 6. Thick Calcrete layer on Enon Formation deposits in a ravine in the Soutpansvlakte Basin.



Figure 7. Satellite image of calcrete cover on Enon Formation deposit.



Figure 8. Thin calcrete layers on Enon Formation deposits.



Figure 9. Calcrete lumps on Enon Formation deposits.



Figure 10. Thick (>2 m) calcrete over Enon Formation deposits, forming a high in a field at the heart of the Soutpansvlakte Basin.



Figure 11. Closer look at the Calcrete shown in Figure 10.