

N. DE HOOP VLEI GORGE

Field note N8e. Hydrology - Disappearing vlei

The De Hoop Vlei water level changes constantly as a function of the rainfall in then catchment area of the Sout River. The vlei was flooded in 2013-14 (Figure 1) and since then, the water level is constantly recedeing and features emerge from the water (Figure 2).

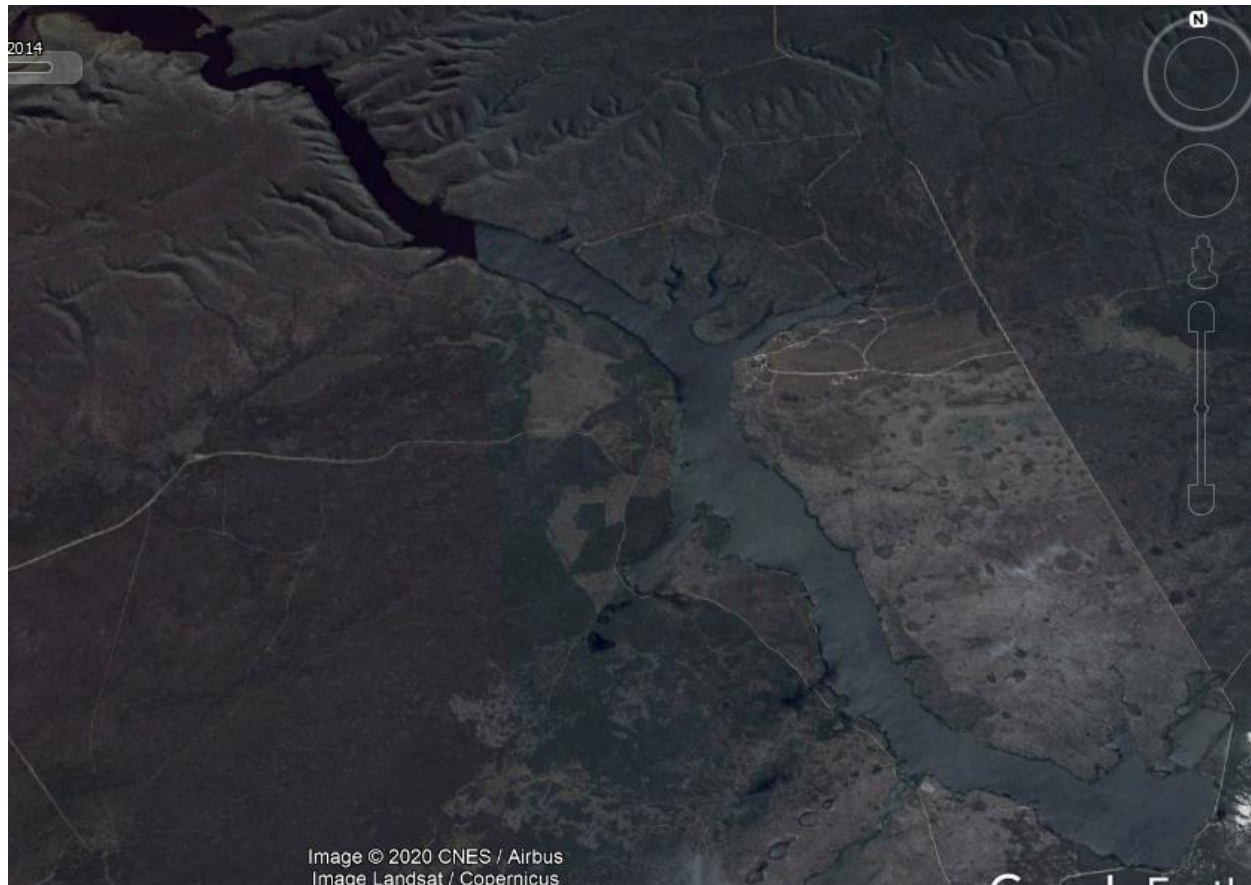


Figure 1. Satellite image of the flooded vlei.



Figure 2. An 'island' emerges in the middle of the vlei, between the resort and Melkkamer.

When the vlei and the marsh are full, kayaking is the only way to get to the other side of the gorges (Figure 3).



Figure 3. Top – leaving the eastern shore. Bottom – arriving at the west bank.



Figure 4. View to the west along the Salt River Gorge when there is no water in the vlei. Unknown canoe.



Figure 5. View to the north along the De Hoop Vlei Gorge.



Figure 6. View across the De Hoop Vlei Gorge.



Figure 7. Mud cracks.



Figure 8. Mud cracks. The mud chunks on the right are overturned.



Figure 9. Top, middle and bottom - mud cracks.