

A. INTRODUCTION

Field Note A1. The Study Area - Geography

Location

The Study Area is located in the Western Cape Province (Figures 1 and 2).

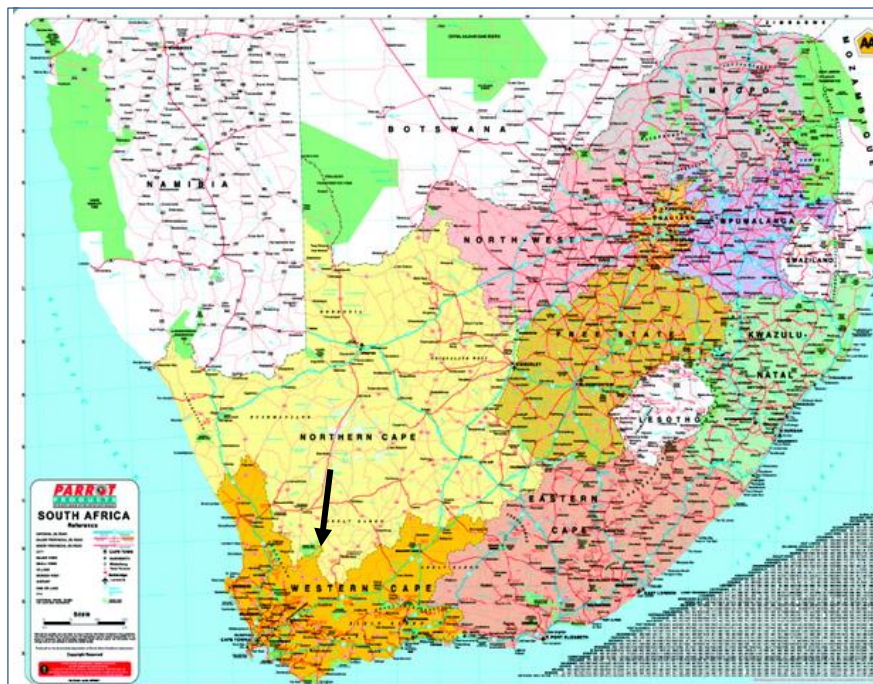


Figure 1. Map of South Africa. Arrow points to the Western Cape Province.



Figure 2. Map of the Western Cape Province. Arrow points to the Study Area.

The Study Area is situated some 200 to 300 km south-east of Cape Town, in the south-eastern part of the Overberg District, spanning Cape Agulhas in the west and Cape Infanta in the east (Figures 3 and 4).



Figure 3. Map of the Overberg District. Arrow points to the Study Area.



Figure 4. Map of the SE part of the Overberg District. Arrow points to the Study Area.

Towns

Bredasdorp is the largest town in the Study Area. Small towns along the coast are (from south-west to north-east): Agulhas, Struis Bay, Arniston and Infanta. The village of Malgas is located on the Breede River, just north of and outside the Study Area (Figures 5 to 10).

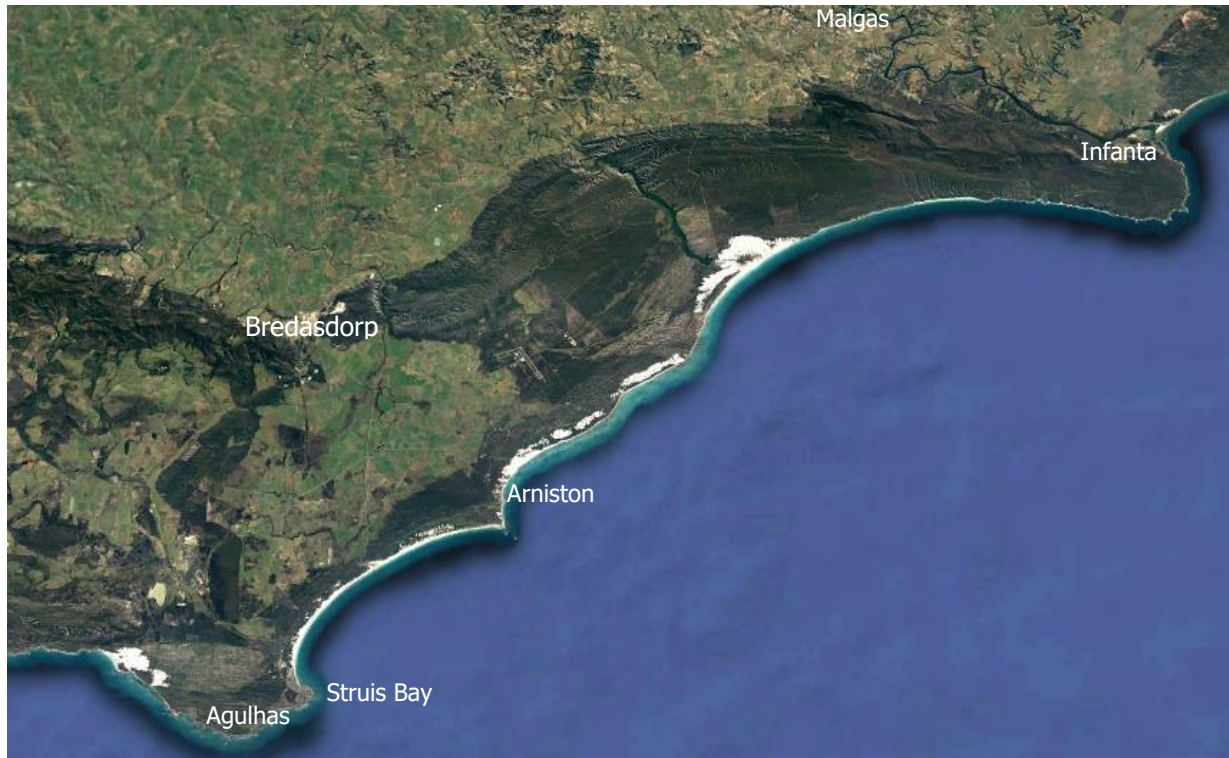


Figure 5. Satellite image of the Study area showing main towns.



Figure 6. Satellite image of Bredasdorp and environs. Arrow points to the lime quarry.

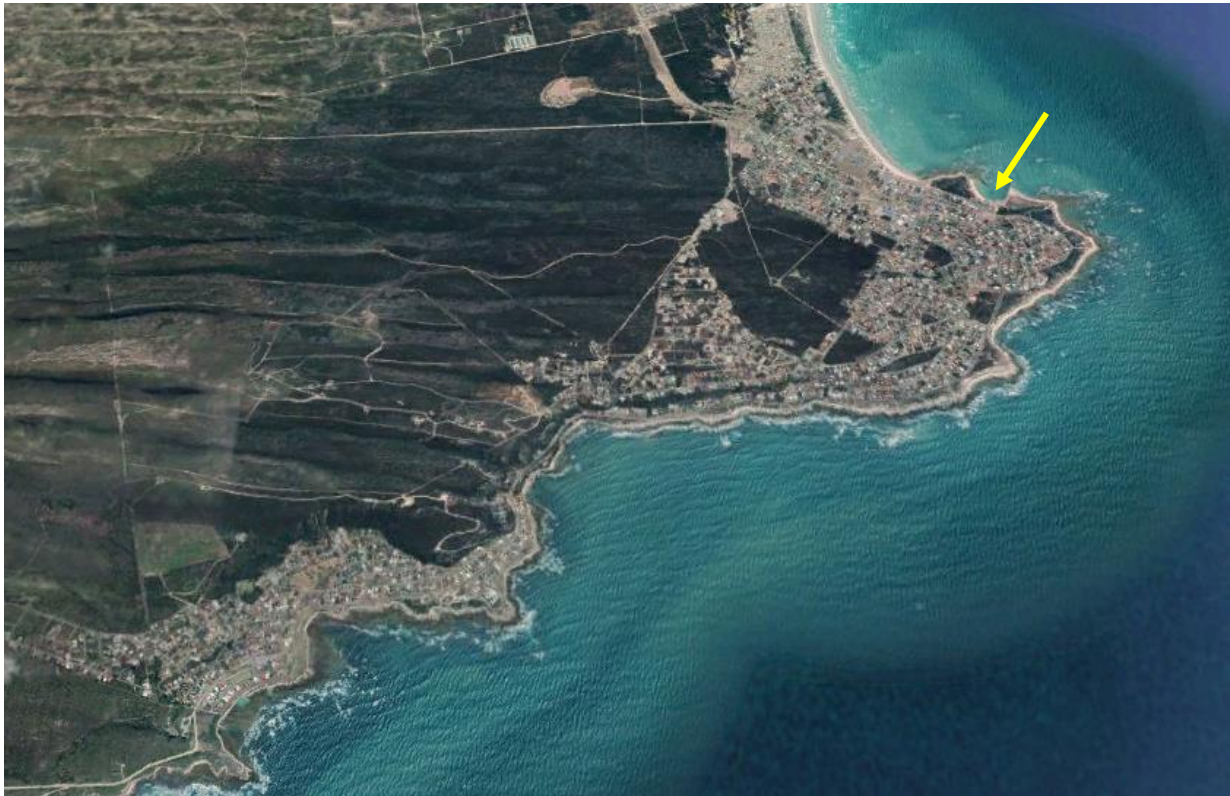


Figure 7. Satellite image of Agulhas and Struis Bay. Arrow points to a harbour and a slipway.

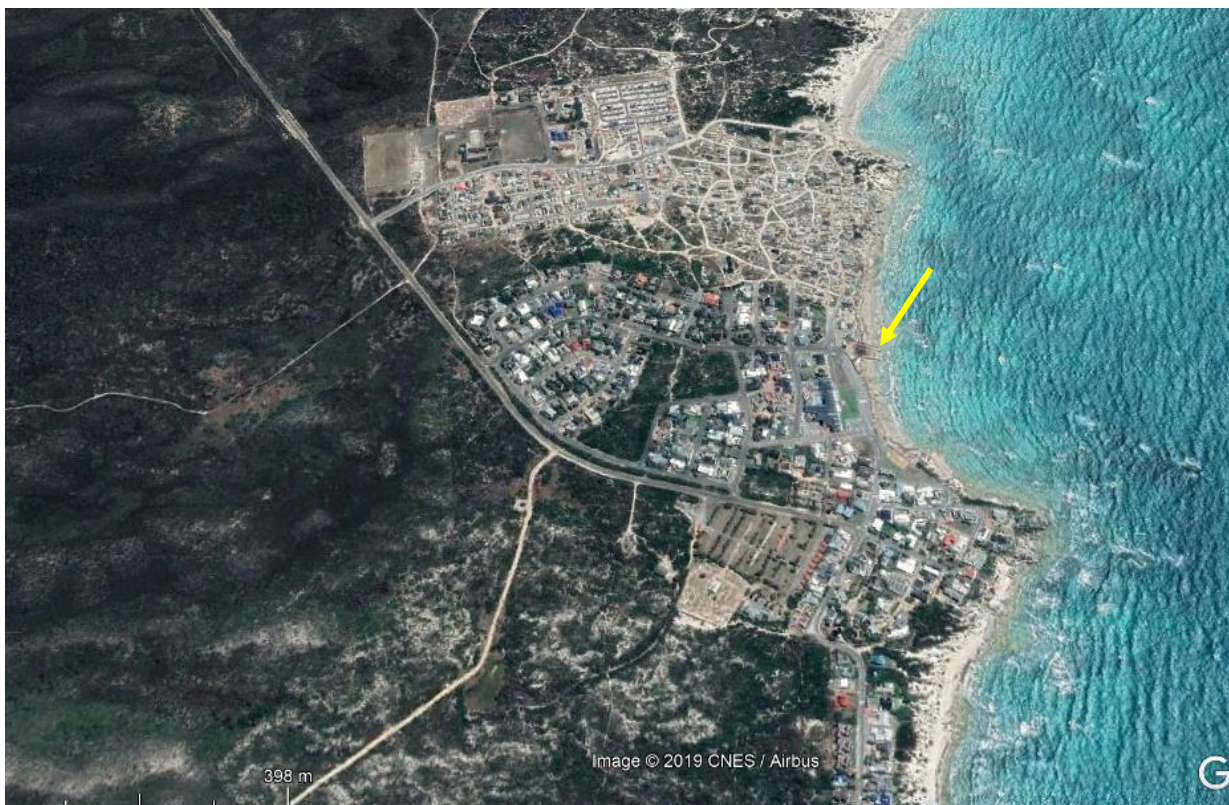


Figure 8. Satellite image of Arniston. Arrow points to a slipway.

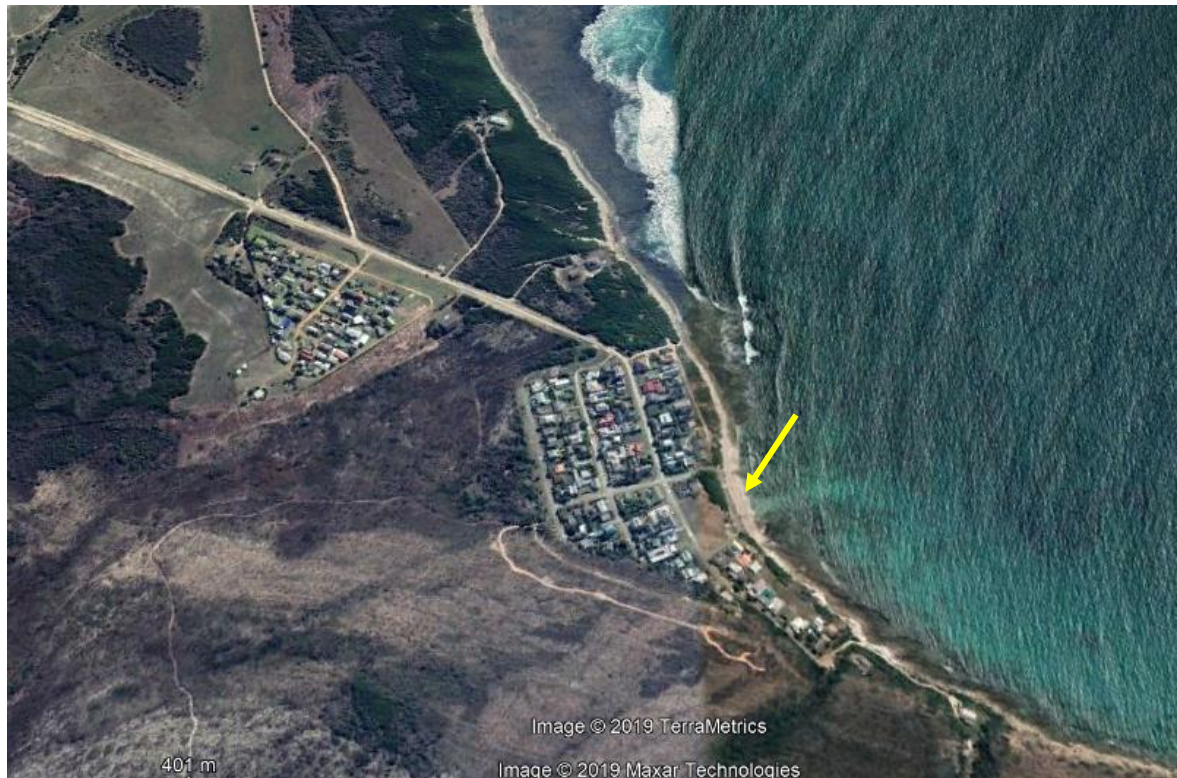


Figure 9. Satellite image of Infanta. Arrow points to a slipway.



Figure 10. Satellite image of Malgas, where it is possible to cross the Breede River on a hand-pulled pontoon-ferry (arrow and inset).

Roads

There are very few public roads in the area (Figures 11 to 13).

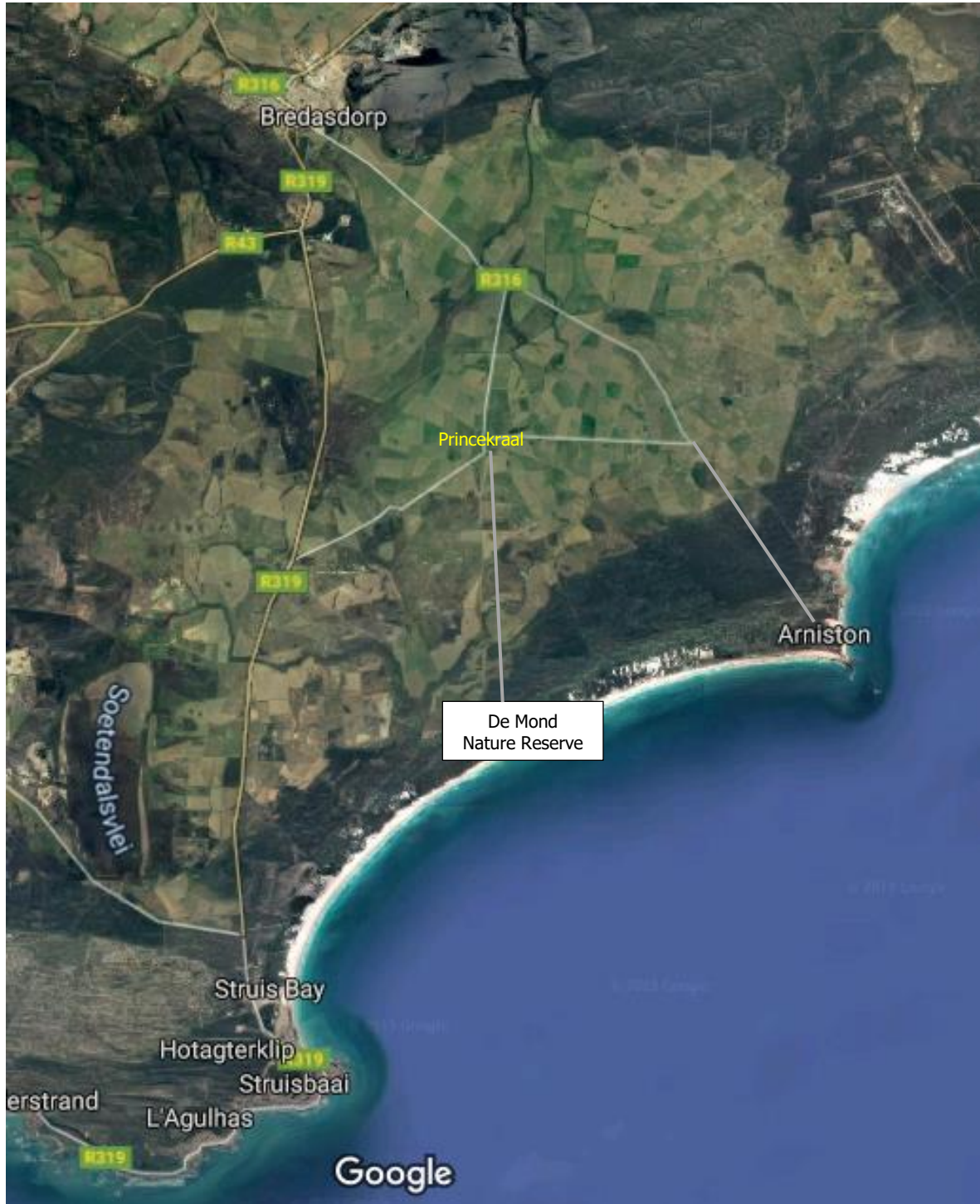


Figure 11. Satellite image of the western part of the Study Area, showing the asphalt roads from Bredasdorp to Cape Agulhas (319) and Arniston (316). Gravel roads connect these roads through Princekraal and the De Mond Nature Reserve.



Figure 12. Satellite image of the middle part of the Study Area, showing the gravel roads from Bredasdorp to Ouplaas and then to De Hoop Nature Reserve.



Figure 13. Satellite image of the middle part of the Study Area, showing the gravel roads from Ouplaas to Malgas and Infanta.

Nature reserves

There are several public and private nature reserves in the Study Area (Figure 14).



Figure 14. Satellite image showing the confines of the Study Area and the nature reserves and conservatories which are located within its confines. They are (from the southwest to the northeast): ANR – Andrewsfield Nature Reserve (private); De Mond Nature Reserve Complex (Cape Nature) which consists of three reserves: SVN – Soetendals Vlei Nature Reserve; DMFR – De Mond Forest Reserve and WKNR – Waenhuiskrans Nature Reserve; HRNR - Heunings River Nature Reserve (private); HBNR – Heuninberg Nature Reserve (municipal); AMT – Ancient Milkwood Tree national monument (private); DOTR – Denel Overberg Test Range; VRNR – Vogel Revier (*German spelling*) Nature Reserve (private); HRR – Haarwegskloof Renosterveld Reserve (private); HKNR – Hasekraal Nature Reserve (private); DHNR – De Hoop Nature Reserve (CapeNature); DHMPA – De Hoop Marine Protected Area (CapeNature); and SSNR – San Sebastian Nature Reserve (private). The ANP – Agulhas National Park – is entirely outside the Study Area.

The nature reserves are briefly described in Chapter B, for general knowledge and to make readers familiar with the area. This Website is not a guide to these reserves (or to any site or feature in the Study Area, for this matter) and it does not provide any tips for travellers.