

## M. SALT RIVER GORGE

### Field note M4a. Morphology - Overview

The Salt River Gorge is ~3.5 km long on the W-E direction and ~1.2 km wide on the N-S direction (Figures 1, 2 and 3). (It is not a true gorge, as its width is larger than the height of the hills around it). It contains the Salt River Marsh.

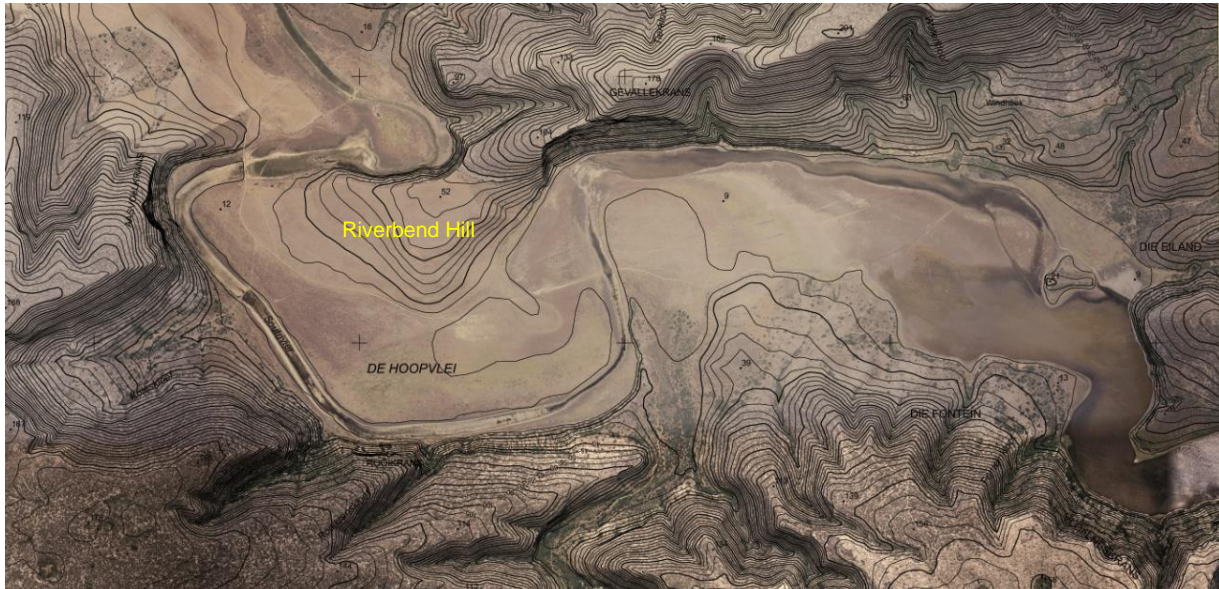


Figure 1. Topographic map of the Salt River Gorge, showing the unusual relief of this feature. The name Riverbend Hill was suggested by the author.

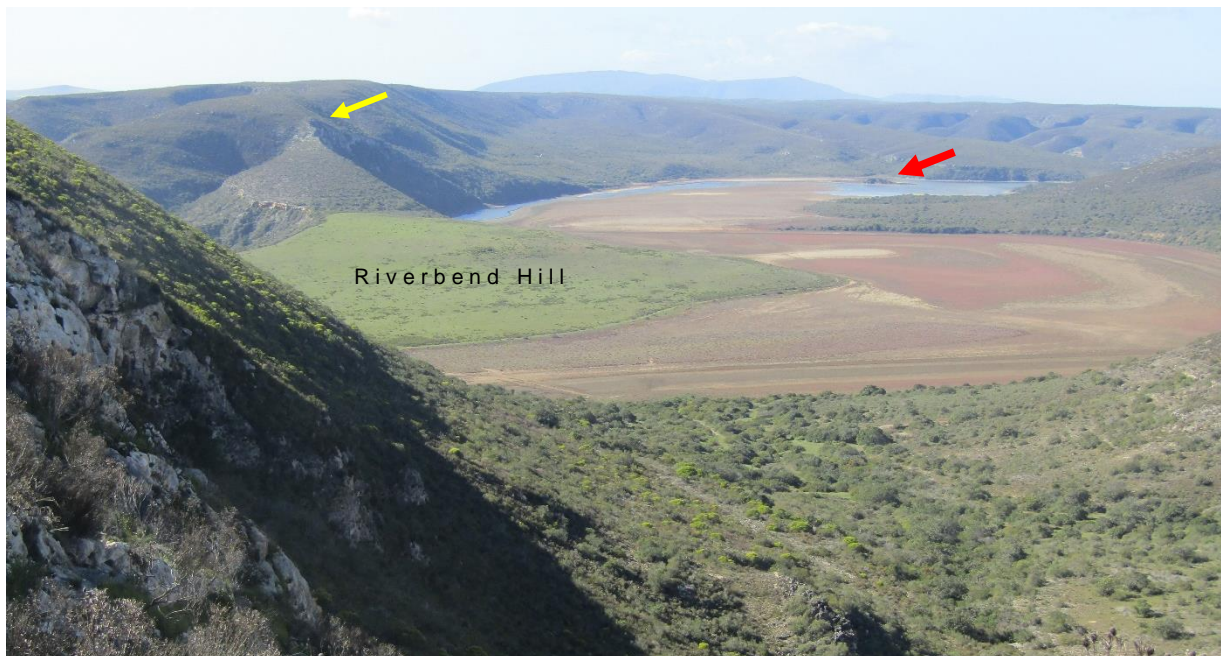


Figure 2. The Salt River Gorge. View to the west from the road to the Windhoek Farm. Black arrow points to Aasvoëlkrans; yellow arrow points to The Island. The marsh is dry; green arrow points to the location of the Windhoek Farm buildings.





**Figure 3. The Salt River Gorge. View to the east from the top of Koleskloof. The yellow arrow points to Gevallekrans; the red arrow points to The Island. The marsh is nearly full.**



**Figure 4. The Salt River Gorge. View to the east from the top of Koleskloof. Yellow arrow points to Gevallekrans; red arrow points to The Island. The marsh is nearly empty.**



The main features around the gorge are the Riverbend Hill (Figure 5), steep hills and cliffs (Figure 6), narrow ravines (Figure 7), wide ravines (Figure 8), slopes of the Hard Dunes (Figures 9 and 10), ravine delta (Figure 11) and an island (Figure 12). (These features are described in other Field Notes of this chapter).



**Figure 5. Satellite image of the Riverbend Hill, on the north side of the Salt River Gorge.**



**Figure 6. Rooikrans, on the south side of the Salt River Gorge.**





Figure 7. Ghwanogatekloof, one of the narrow ravines on the south side of the Salt River Gorge.



Figure 8. Oubuiterskloof (yellow arrow) and Sandkraal se Kloof (white arrow), two sub-parallel ravines on the east side of the Salt River Gorge.





**Figure 9. Satellite image showing the slopes of the Hard Dunes on the south side of the Salt River Gorge. The yellow arrow points to the Langkloof Delta (Figure 11); the red arrow points to The Island (Figure 12).**



**Figure 10. View from the northeast on the slopes of the Hard Dunes, on the south side of the gorge.**





**Figure 11. Satellite image of the Langkloof Delta.**



**Figure 12. The Island, at the east end of the Salt River Gorge. View to the southeast from the buildings of Windhoek Farm.**