

I. HEUNINGNES AND KARS RIVERS

Field Note I5d. Kars River Gorge - Archaeology

Four sites of ruins are located along the Kars River Gorge – in the north, the middle and the south (Figure 1).

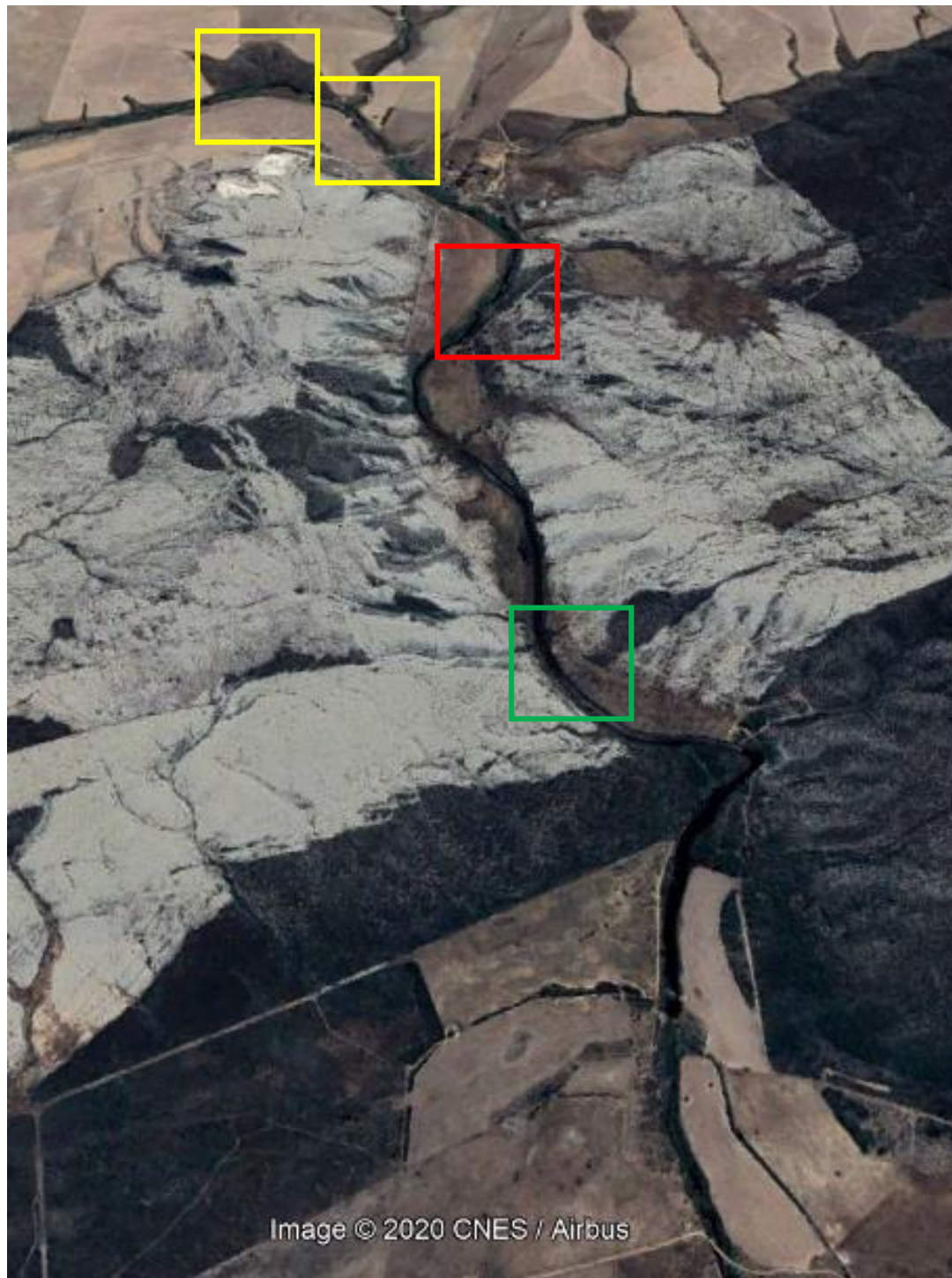


Figure 1. Satellite image of the Kars River Gorge. Boxes indicate ruin sites: the northern (yellow), middle (red) and southern (green).

The northern sites are situated on the north bank of the Kars River, at the northern entrance to the Kars River Gorge (Figures 2 to 8).

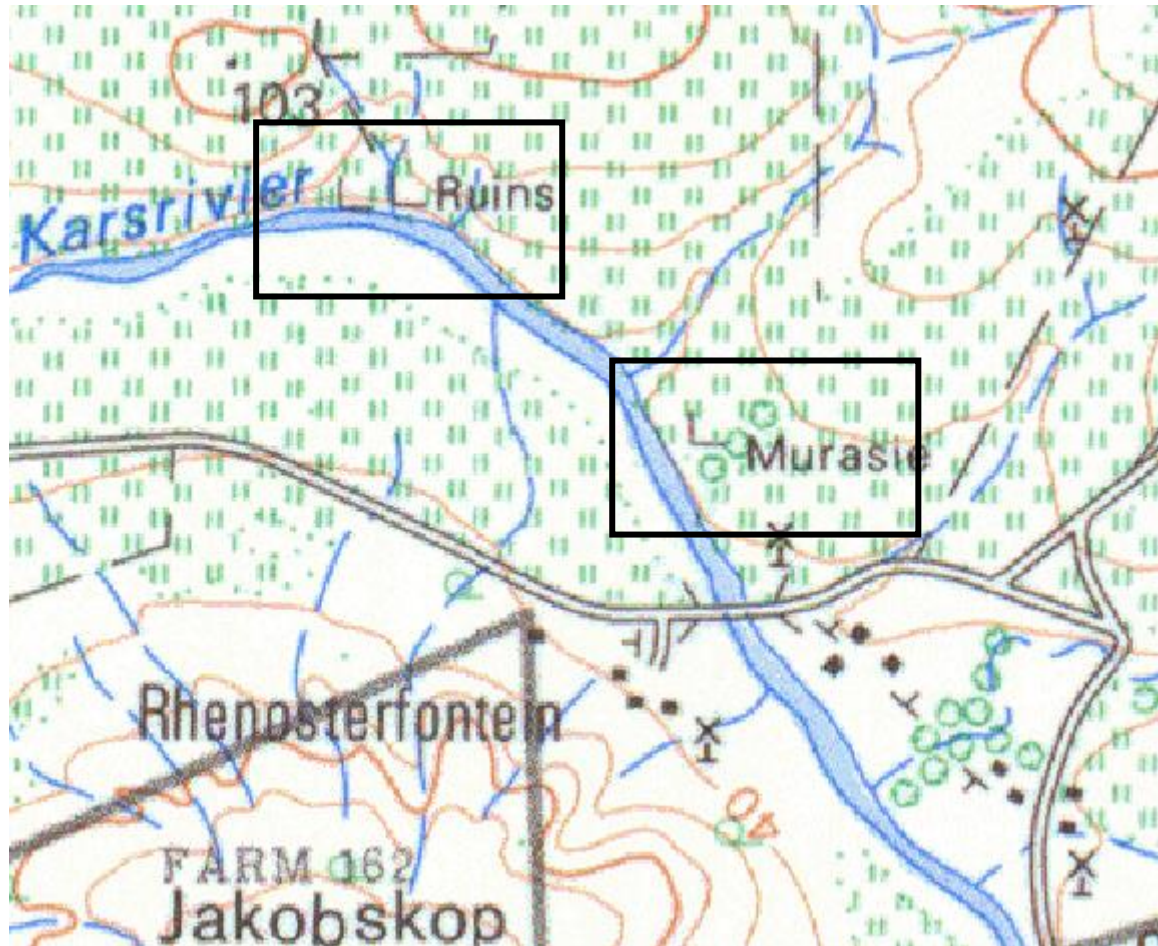


Figure 2. Topography map (top) and satellite image (bottom) showing the locations of the northern ruin sites (boxed).



Figure 3. Satellite image of the western ruins of the northern site. Arrows point to the ruins.

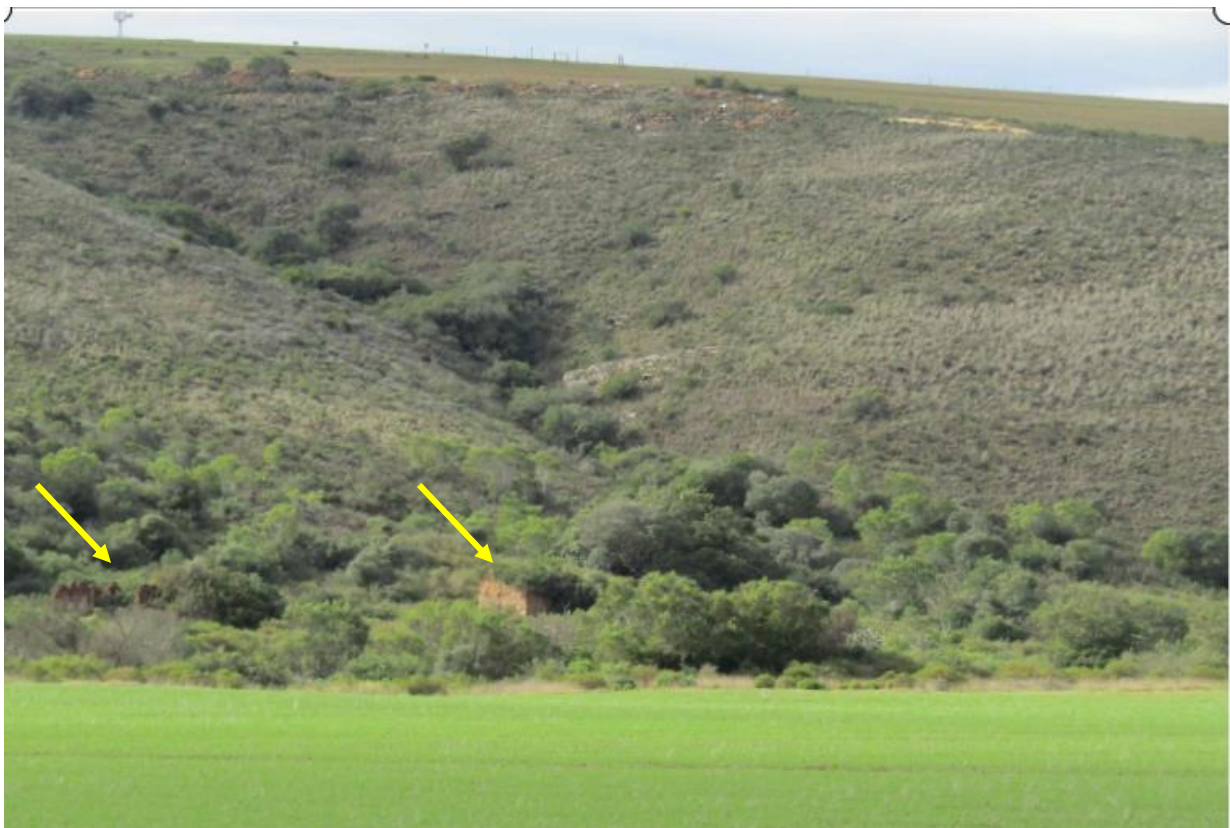


Figure 4. The western ruins (arrows) of the northern site. The Kars River runs below the ruins. View to the north.



Figure 5. The western ruins of the northern site. Top – the two ruins; view to the west. Middle the eastern ruin – view to the south (the Kars River quarry at the background). Bottom – the west ruin; view to the west.



Figure 6. Satellite image of the eastern site (Murasie). Arrows point to the ruins.



Figure 7. The Murasie ruins. View to the east. The Kars River runs below the ruins.



Figure 8. The Murasie ruins. Top – view to the west. Bottom – view to the southeast.

The middle site of ruins (Figures 9 to 11) is located on the east bank of the river. It is not marked on the topography maps (probably because it is hidden in a thicket of tall gumtrees).



Figure 9. Satellite image showing the middle site of ruins (boxed).



Figure 10. Top and bottom: ruins of the middle site.



Figure 11. Top and bottom: ruins of the middle site.

The southern site, Bodrif, is also situated on the east bank of the Kars River (Figures 12 to 14).

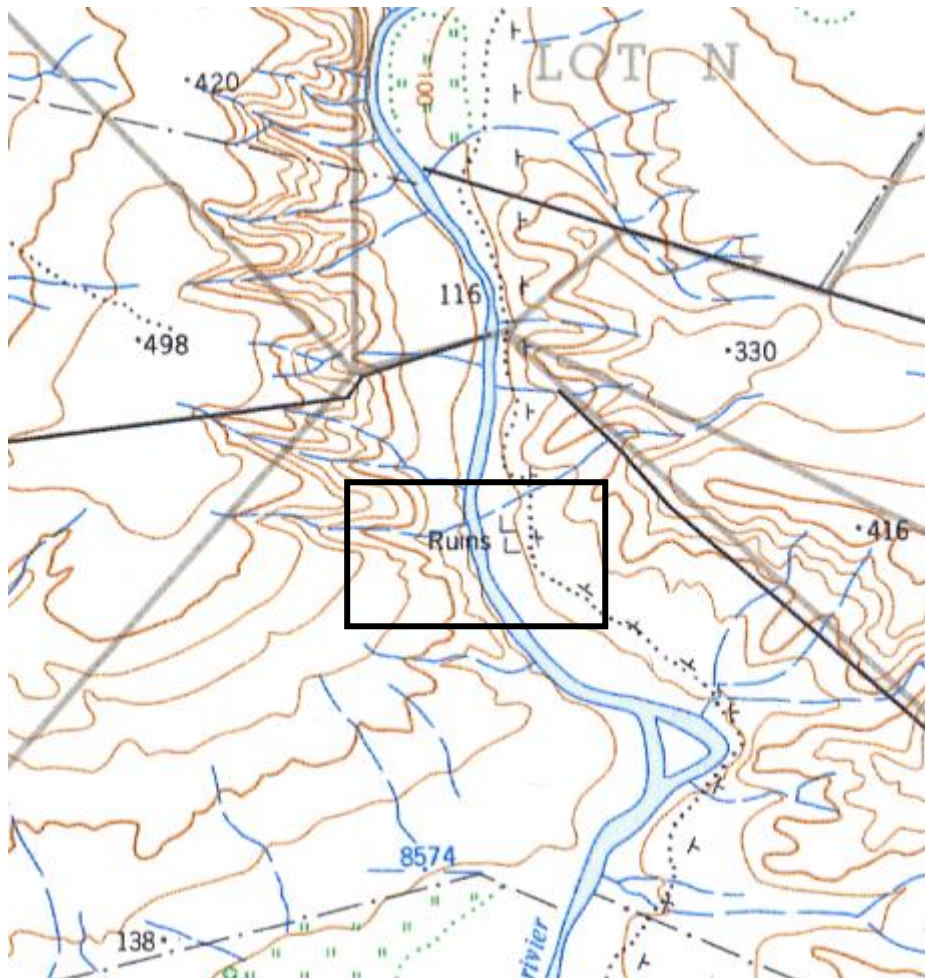
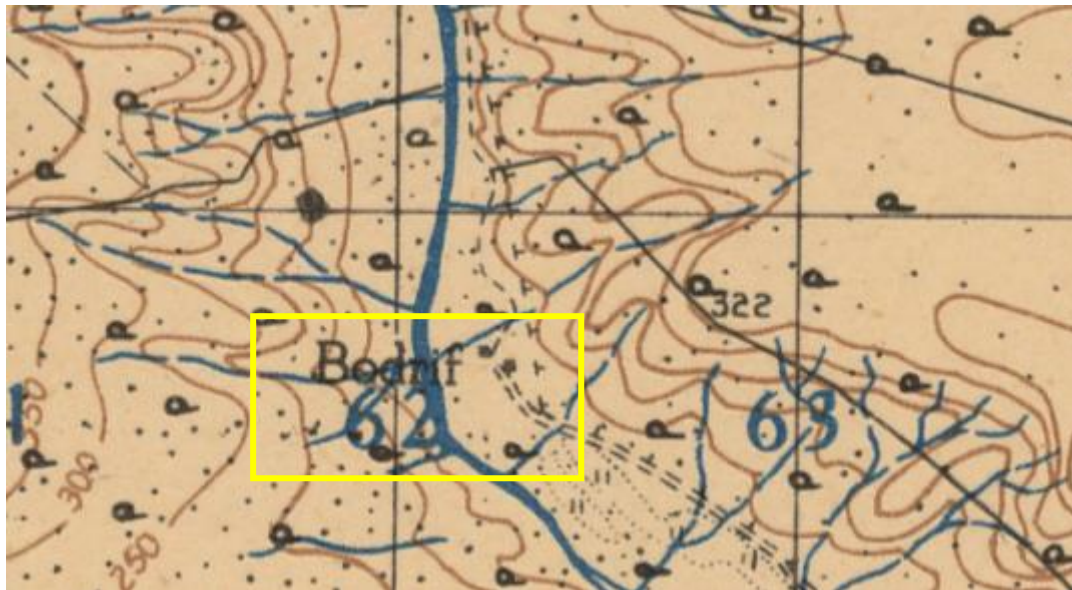


Figure 12. Topography maps showing Bodrif - the southern ruin site (boxed). Top – map of 1944; bottom – map of 2016.



Figure 13. Satellite images showing Bodrif before (top) and after a fire (bottom). Arrows point to the ruins.



Figure 14. Top, middle and bottom: ruins of the southern site (Bodrif).

The author did not find any information on the ruins along the Kars River Gorge. The history of the ruins is a subject for further studies.