

I. HEUNINGNES AND KARS RIVERS

Field Note 15d. Kars River Gorge - Archaeology

Four ruin clusters are located along the Kars River Gorge – in the north, the middle and the south (Figure 1).

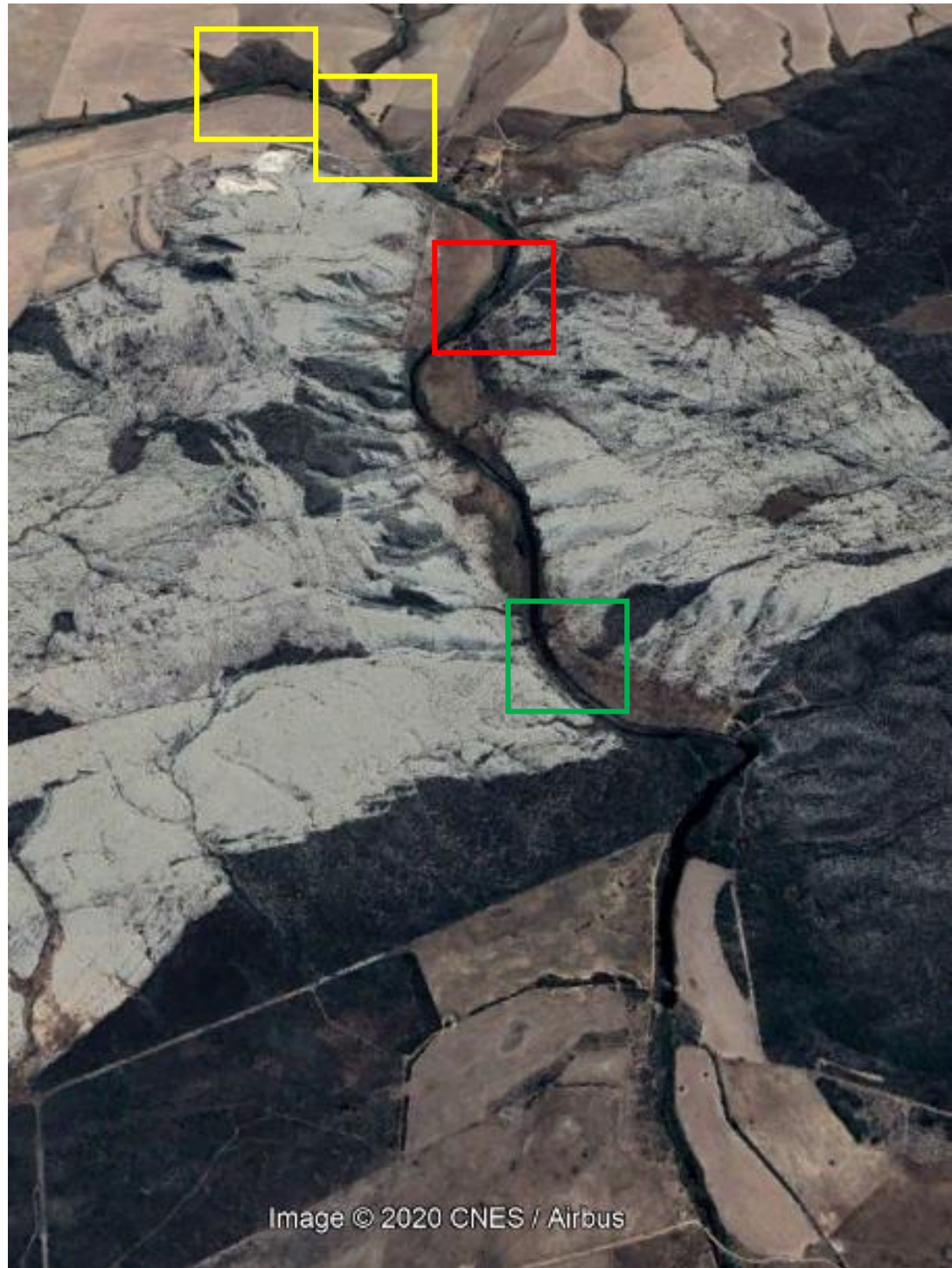


Figure 1. Satellite image of the Kars River Gorge. Boxes indicate the northern (yellow), middle (red) and southern (green) clusters of ruins.

The northern clusters are situated on the north bank of the Kars River, at the northern entrance to the Kars River Gorge (Figures 2 and 3). These ruins are still to be visited.

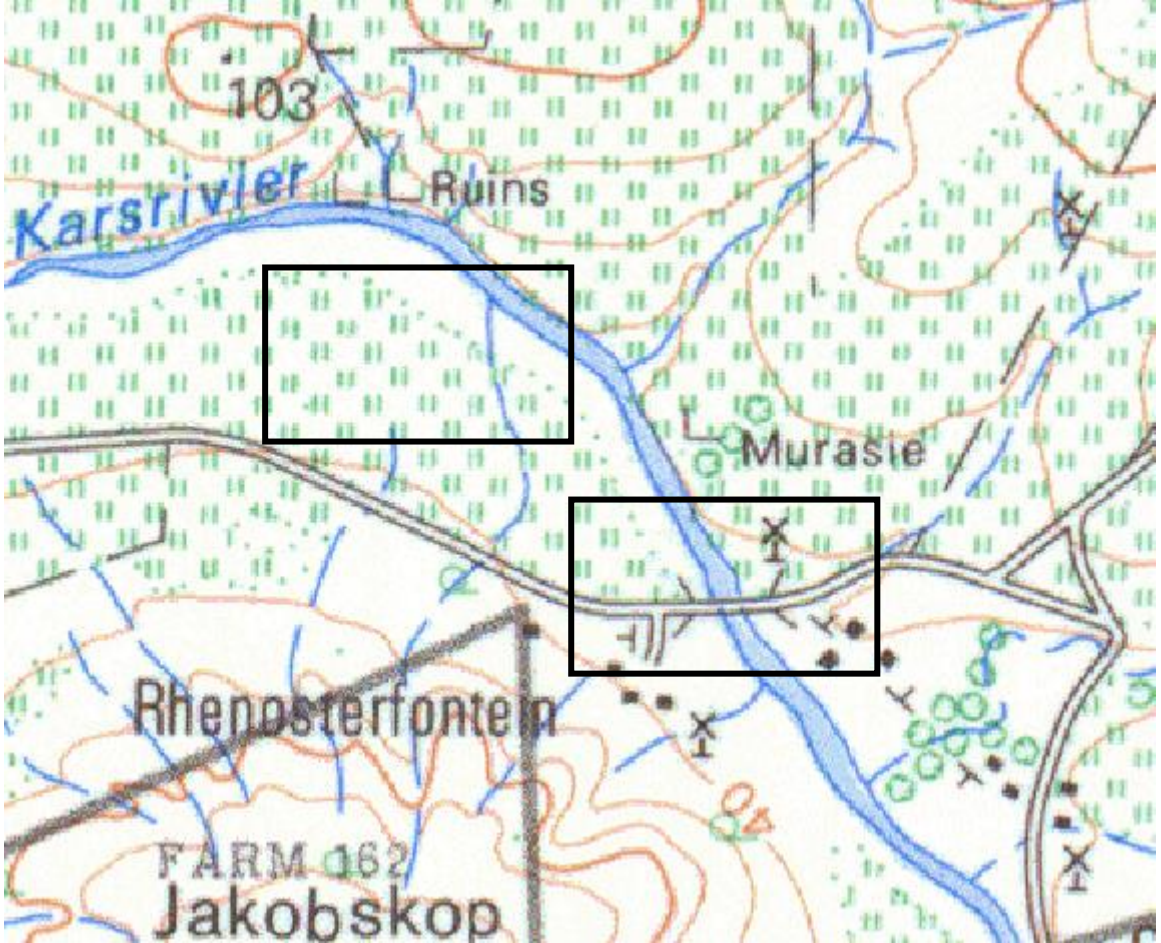


Figure 2. Topography map (top) and satellite image (bottom) showing the northern clusters of ruins (boxed).



Figure 3. Satellite images of the northern clusters. Top - western ruin cluster; bottom – eastern cluster (Murasie). Arrows point to the ruins.

The middle cluster of ruins (Figures 4 to 6) is located on the east bank of the river. It is not marked on the topography maps.



Figure 4. Satellite image showing the middle cluster of ruins (boxed).



Figure 5. Top and bottom: ruins of the middle cluster.



Figure 6. Top and bottom: ruins of the middle cluster.

The southern cluster, Bodrif, is also situated on the east bank of the Kars River (Figures 7 to 9).

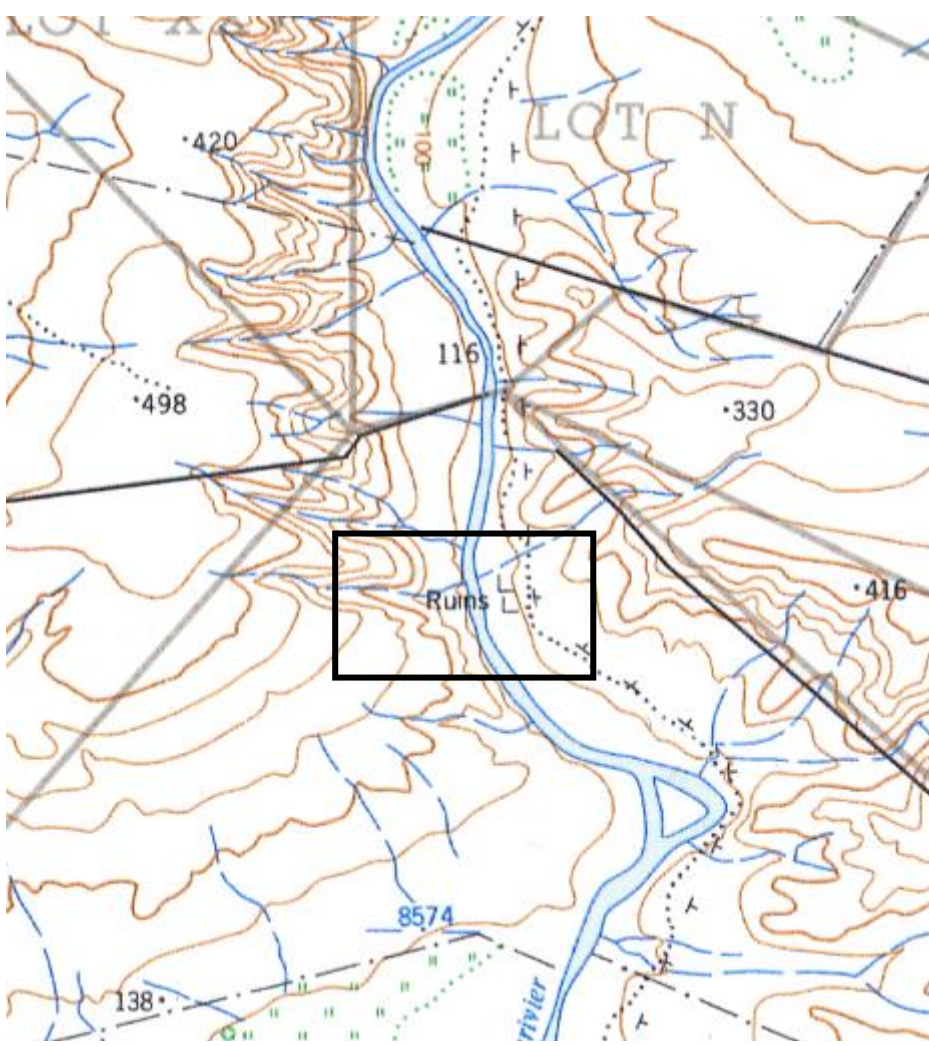
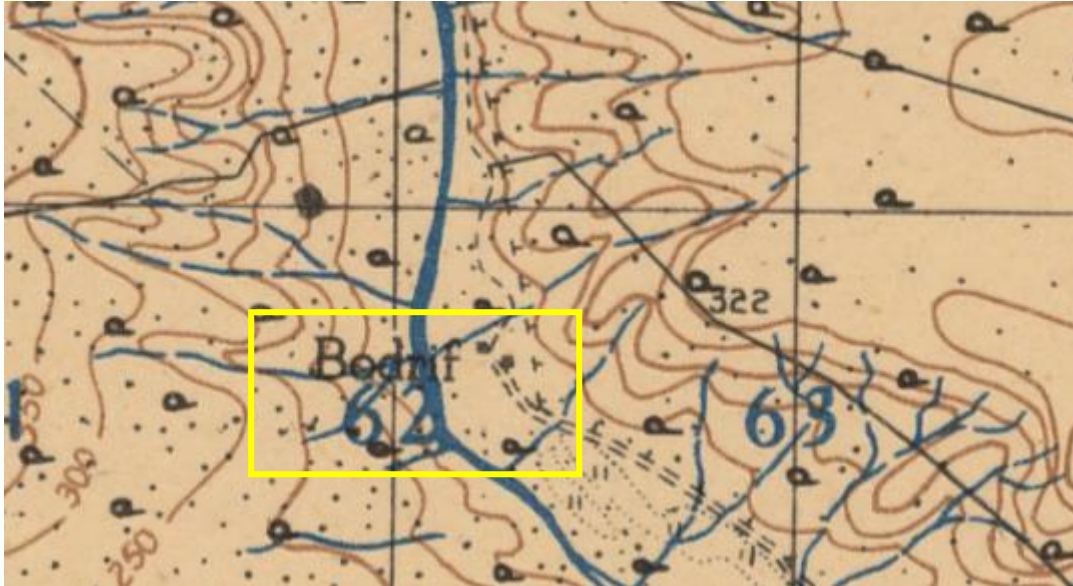


Figure 7. Topography maps showing Bodrif - the southern cluster of ruins (boxed). Top – map of 1944; Bottom – map of 2016.



Figure 8. Satellite images showing Bodrif before a fire (top) and after a fire (bottom).



Figure 9. Top, middle and bottom: ruins the southern cluster- Bodrif.

The author did not find any information on the ruins along the Kars River Gorge. They are subjects for further studies.