

Figure 2. Enlargement of the boxes in the geology maps in Figure 1. Top – northern section; bottom southern section. Numbers indicate sites Enon Formation outcrops, which are shown in this order in the figures below.

The Enon Formation outcrops in the sections mentioned above are shown in the figures below, from north to south.



**North Section, Outcrop 2: Oulandshoek (arrow). Satellite image. Soil.**





**North Section, Outcrop 2: Oulandshoek. Soil with small clasts. View to the southeast, into the Salt River Gorge.**



**North Section, Outcrop 3: Soil (ellipsoid) in the kloof south east of Filandsshoogte Farm (arrow).**





**North Section, Outcrop 4: Soil (ellipsoids) in the kloofs between Filandsshoogte Farm and the Salt River Gorge.**



**North Section, Outcrop 4: Soil (arrow) in the kloofs between Filandsshoogte Farm and the Salt River Gorge.**





**North Section, Outcrop 4: Soil (arrow) in the kloofs between Filandsshoogte Farm and the Salt River Gorge.**



**North Section, Outcrop 4: Soil (arrow) in the kloofs between Filandsshoogte Farm and the Salt River Gorge.**





**North Section, Outcrop 5: Hills between the road and the gorge. Soil capped with calcrete.**



**North Section, Outcrop 5: Hills between the road and the gorge. Soil capped with calcrete.**





**North Section, Outcrop 6: Riverbend Hill, west of Gevallekrans. Soil with large clasts, some of which are well rounded.**



**North Section, Outcrop 7: Hills on the south side of the Salt River Gorge. Enon sediments (reworked shales) below the Pinnacles.**



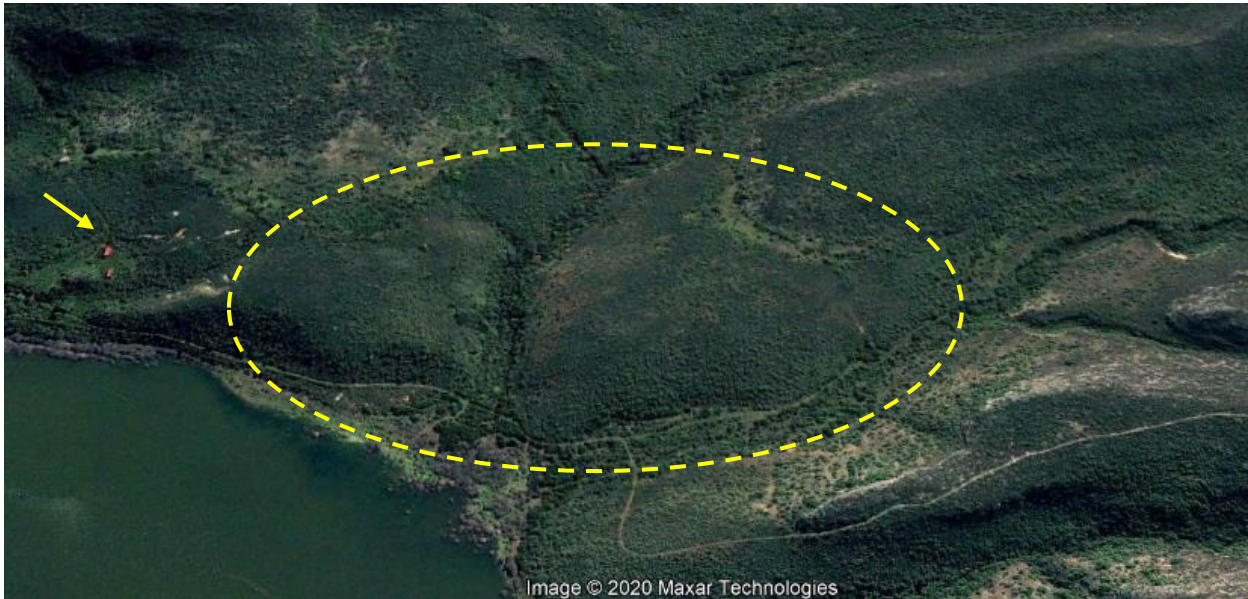


**North Section, Outcrop 8: Hills on the south side of the Salt River Gorge. Enon sediments (reworked shales) below the Rooikrans.**



**North Section, Outcrop 8: Hills on the south side of the Salt River Gorge. Enon sediments (reworked shales) below the Rooikrans.**





**South Section, Outcrop 1: Hills and kloofs (ellipsoid) southeast of Windhoek Farm (arrow).  
Satellite image. The Enon Formation sediments are covered with very dense vegetation.**



**South Section, Outcrop 2: The Island. Enon sediments over shales.**





**South Section, Outcrop 2: The Island. Coarse sediments and gravels.**

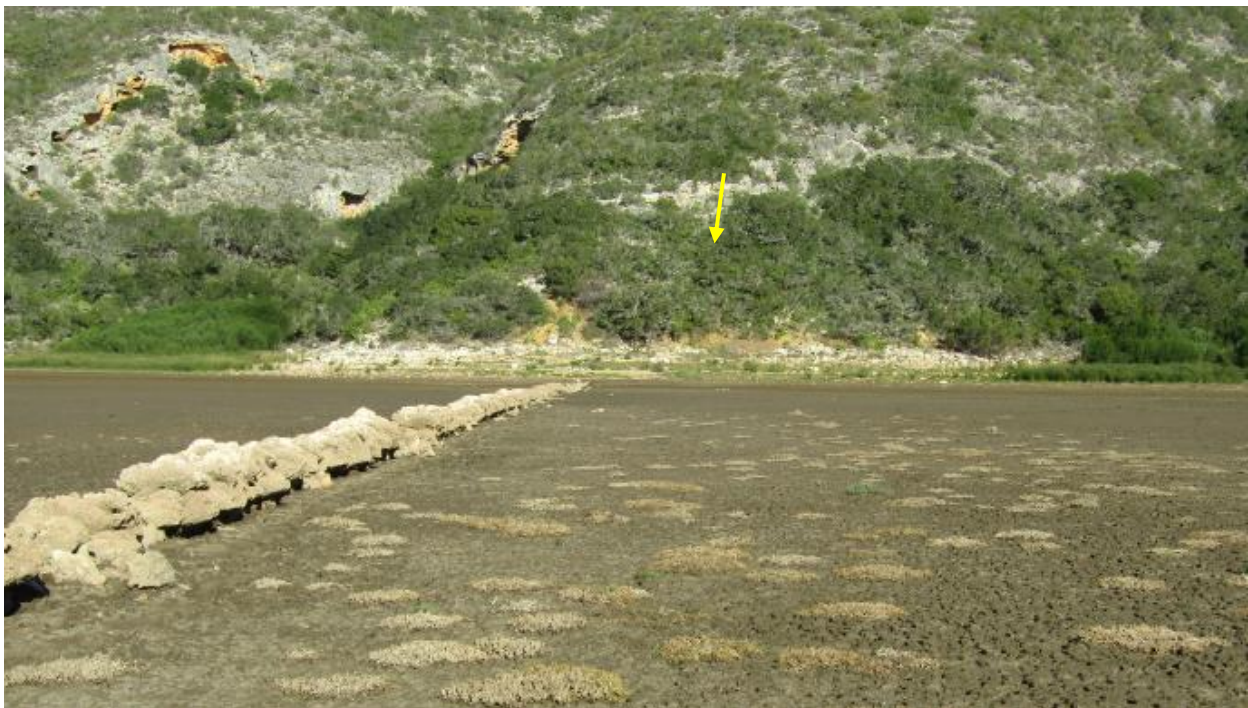


**South Section, Outcrop 3: The southern shore. Coarse, loose sediment and some gravels (arrow).**





**South Section, Outcrop 6: Hills on the western side of the De Hoop Vlei. Coarse sediment and some gravels (arrow).**



**South Section, Outcrop 7: Hills on the western side of the De Hoop Vlei. Coarse sediment and some gravels (arrow).**