

**M. SALT RIVER GORGE**

**Field Note M4f. Morphology - The Island**

A little island is situated close to the north bank of the gorge (Figures 1 to 7). The Island (called Die Eiland on all the maps) is 180 m long on the E-W direction and 170 m long on the N-S direction. The highest elevation, of 22 m (about 12 m above the marsh level), is at the western point of the island.



**Figure 1. The topography map of the area (3420AD) does not show The Island. The arrow points to the site where The Island should have been marked on the map.**



**Figure 2. Satellite image showing The Island (arrow) when the water level of the marsh is high.**



Figure 3. Satellite image of The Island when the water level of the marsh water level is low.

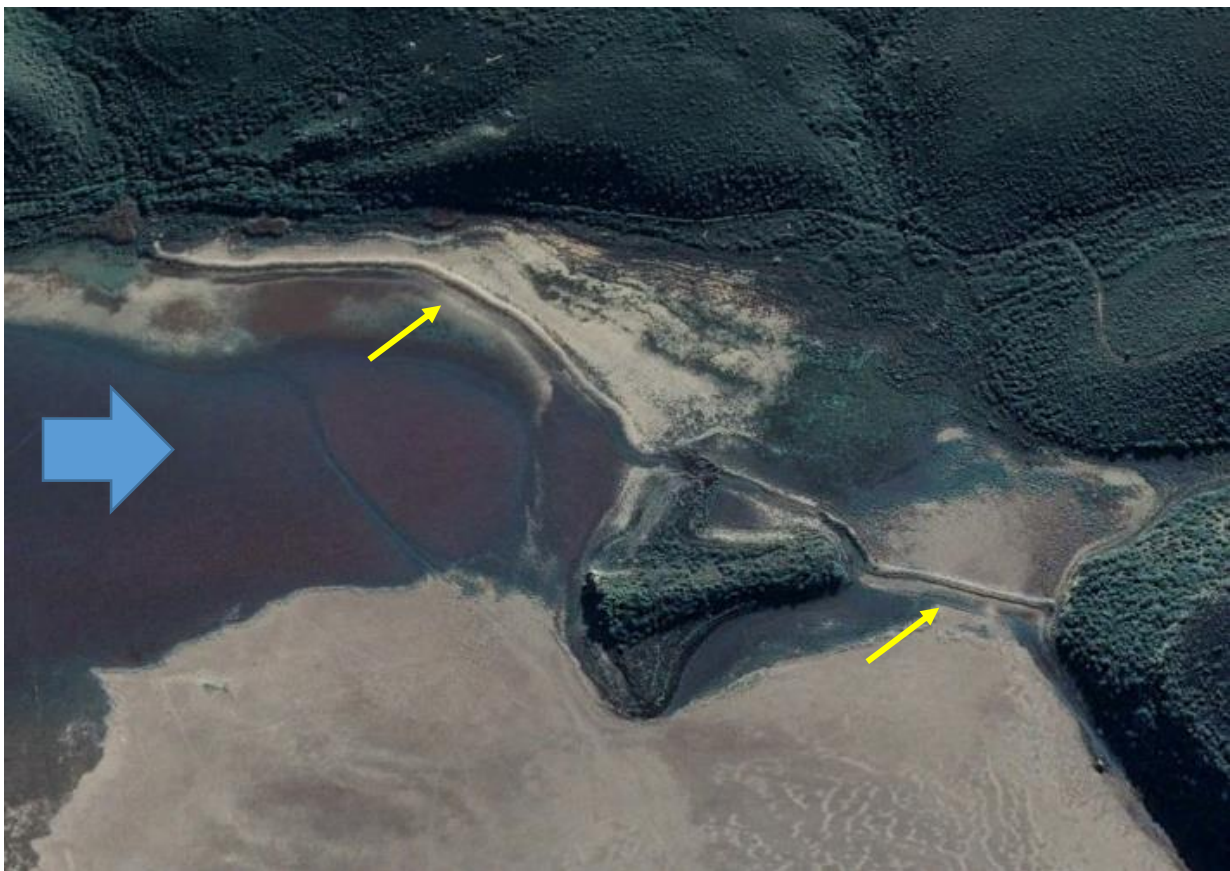


Figure 4. Satellite image of The Island when the marsh is dry. Blue arrow points to an area covered with purple vegetation. Note the dyke (yellow arrows), built by the settlers of the Windhoek Farm (see field Note about roads and causeways).



**Figure 5. View from the south shore on The Island (blends with the hills behind it).**



**Figure 6. View to the north on The Island from the south shore. The marsh is full.**



**Figure 8. View to the east of the northern tip of The Island. The marsh is dry.**

A fence, erected to prevent animals from moving out of De Hoop Nature Reserve crosses The Island from south to north (Figures 9 and 10). Most of it is in ruin.



**Figure 9. The fence on the south flank of The Island. View to the south.**



**Figure 9. The fence on the north flank of The Island. View to the north on the buildings of the Windhoek Farm.**