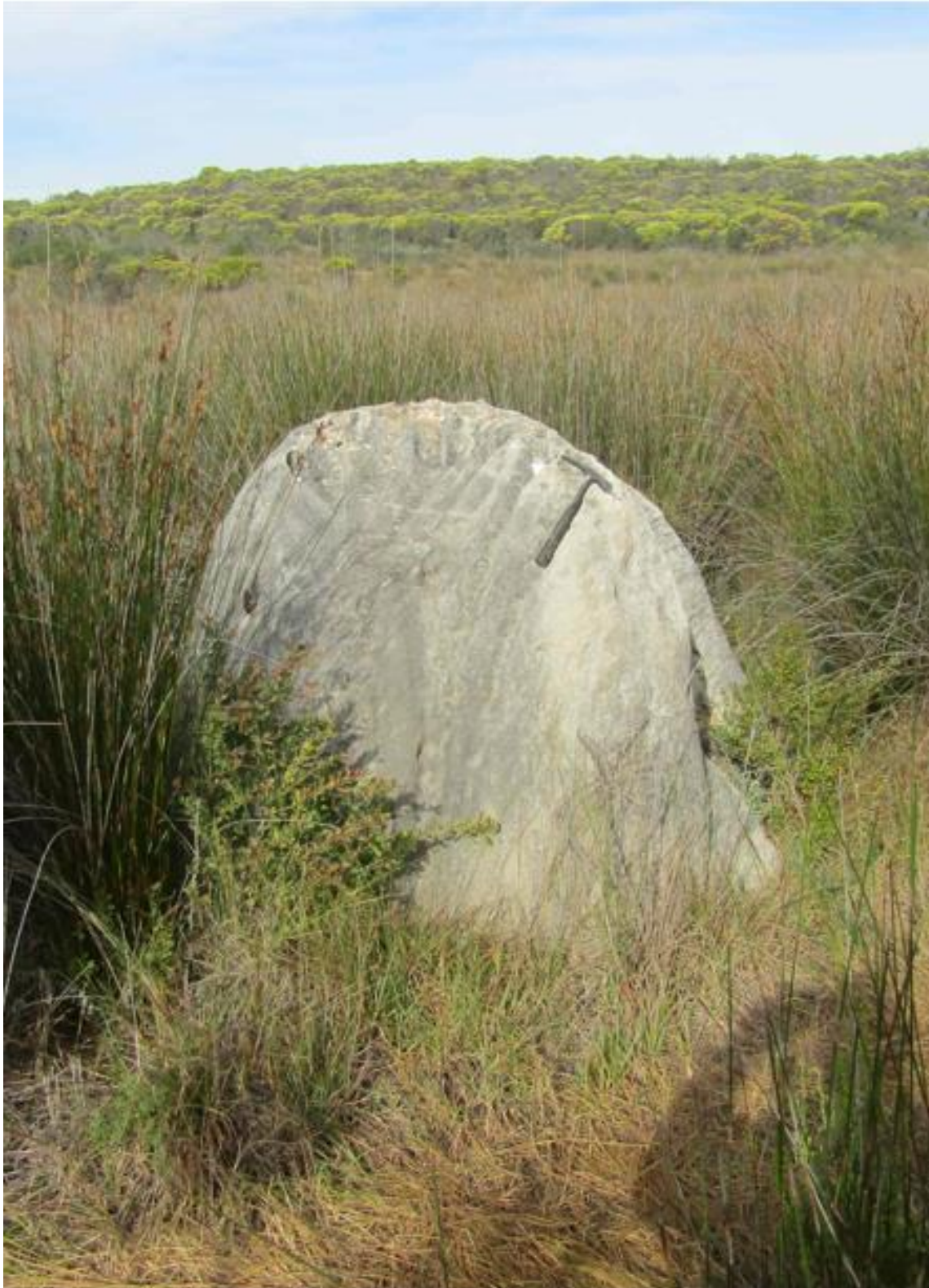


## O. EAST VALLEYS

### Field note P3. Non-karst pinnacles – Type B



**Pinnacle in the East Valleys.**







These pinnacles, emerging from the sandy floors of the East Valleys (Figure 2). were called by the author Type B Pinnacles. [Type A pinnacles are those which emerge from the rocky, calcrete slopes of the East Hard Dunes. See Chapter O].



**Figure 2. Top and bottom: the red sand floors of the East Valleys.**



There are two main forms of pinnacles in the East Valleys: a. 'Tombstones' and b. 'Pillows'.

### ***Tombstones***

Tombstones are usually found as isolated features (Figure 3).



**Figure 3. Top and bottom: 'tombstones' on the red sand floor of the East Valleys.**  
(Person at bottom photo: H Brighton from Bredasdorp).



### **Pillows**

Pillows are round and lower than the Tombstones and are found in clusters (Figure 4) and as isolated features (Figure 5).



**Figure 4. Top and bottom: clusters of ‘pillows’ on the red sand floor of the East Valleys.**





**Figure 5. Top and bottom: isolated 'pillows' on the red sand floor of the East Valleys.**

These pinnacles have never been described or mapped before. They are thought to be of calcrete-silcrete intergrade, but further study is required. Read about other pinnacles in Chapters E, M and O.