

D. DURICRUSTS

Field Note D2d. Calcrete on the Bredasdorp Plain



Calcrete on strongly folded Bokkeveld shale in a quarry on the Bredasdorp Plain.

D. DURICRUSTS

Field Note D2d. Calcrete on the Bredasdorp Plain

The Bredasdorp Plain is a large area, underlain by various rock formations and sediments (Figure 1). A few calcrete types were distinguished (Figures 2 to 7).



Figure 1. Satellite image of the Bredasdorp Plain.



Figure 2. Satellite image of the east part of the Bredasdorp Plain. The light areas are patches of calcrete.



Figure 3. Satellite image of an area in the south of the Bredasdorp, showing calcrete-capped low hills.



Figure 4. Calcrete layer typical of the low hills shown in Figure 3.

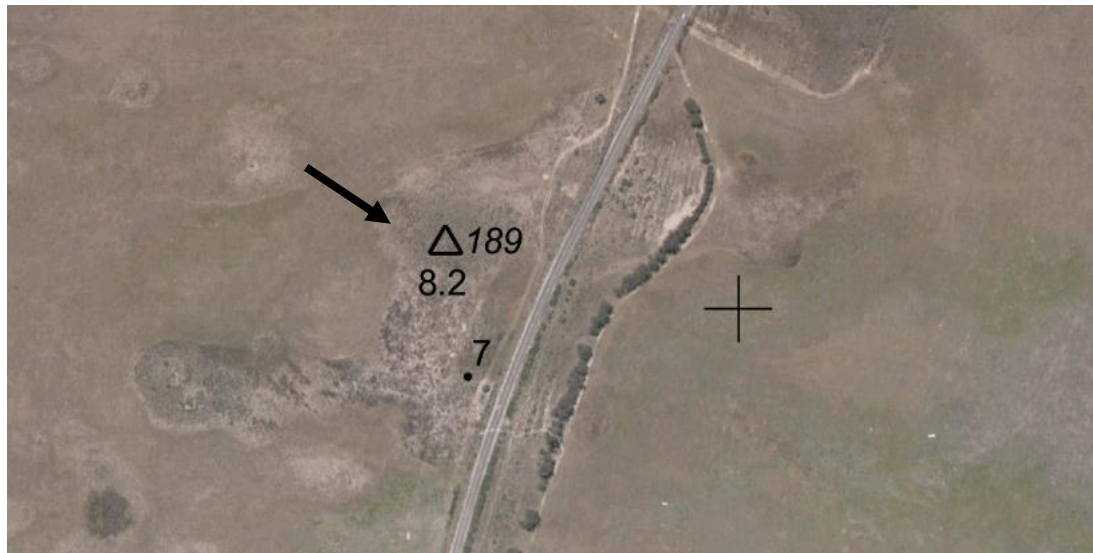


Figure 5. The calcrete hills can attain heights of ~4 m above the surrounding ground, as the one in these photos (arrow), which is crossed by the road from Bredasdorp to Cape Agulhas. Top – geology map; middle – satellite image; bottom – view across the road.



Figure 6. Calcrete over Bokkeveld shales in the east of the Bredasdorp Plain.



Figure 7. Sheets of clacrete, most probably on Bokkeveld shales, in the north of the Bredasdorp Plain.

Calcrete on Bokkeveld and Bredasdorp Group Formations in the Study Area are also described in other Field Notes in this chapter.