

U. SHORES

Field Note U8c5. Arniston shores – Geomorphological features - Karst pinnacles



The karst pinnacle cluster at Arniston.

U. SHORES

Field Note U8c5. Arniston shores – Geomorphological features - Karst pinnacles

There are two clusters of pinnacles on the East Shore of Arniston. This Field Note is about the northern cluster, or the karst pinnacles (Figures 1, 2 and 3). Read about the dissolution pillars in the Field Note about dissolution features.

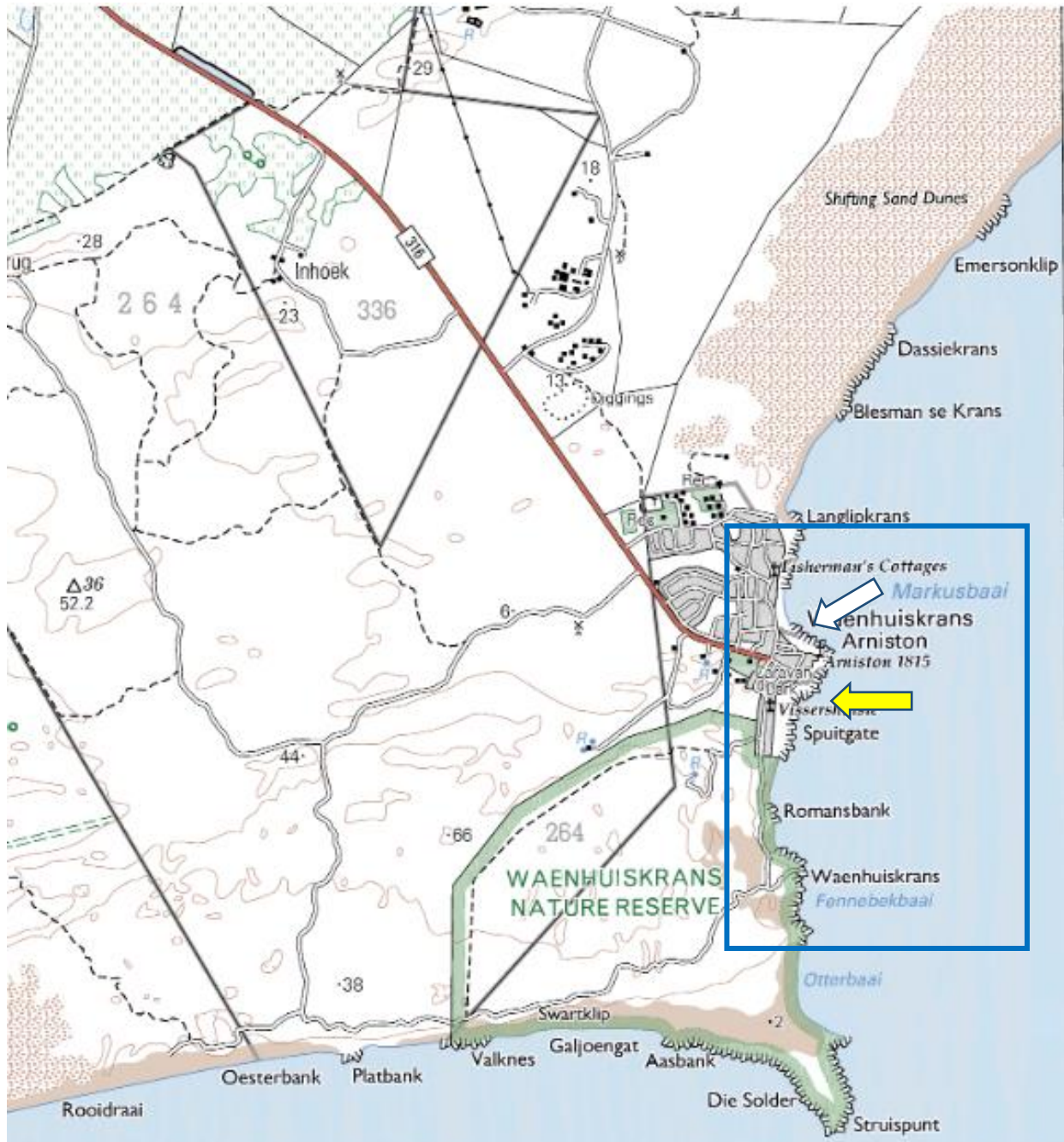


Figure 1. Topography map of Arniston shores. Blue box indicates the East Shore. White arrow points to the karst pinnacles (yellow arrow points to the dissolution pillars).

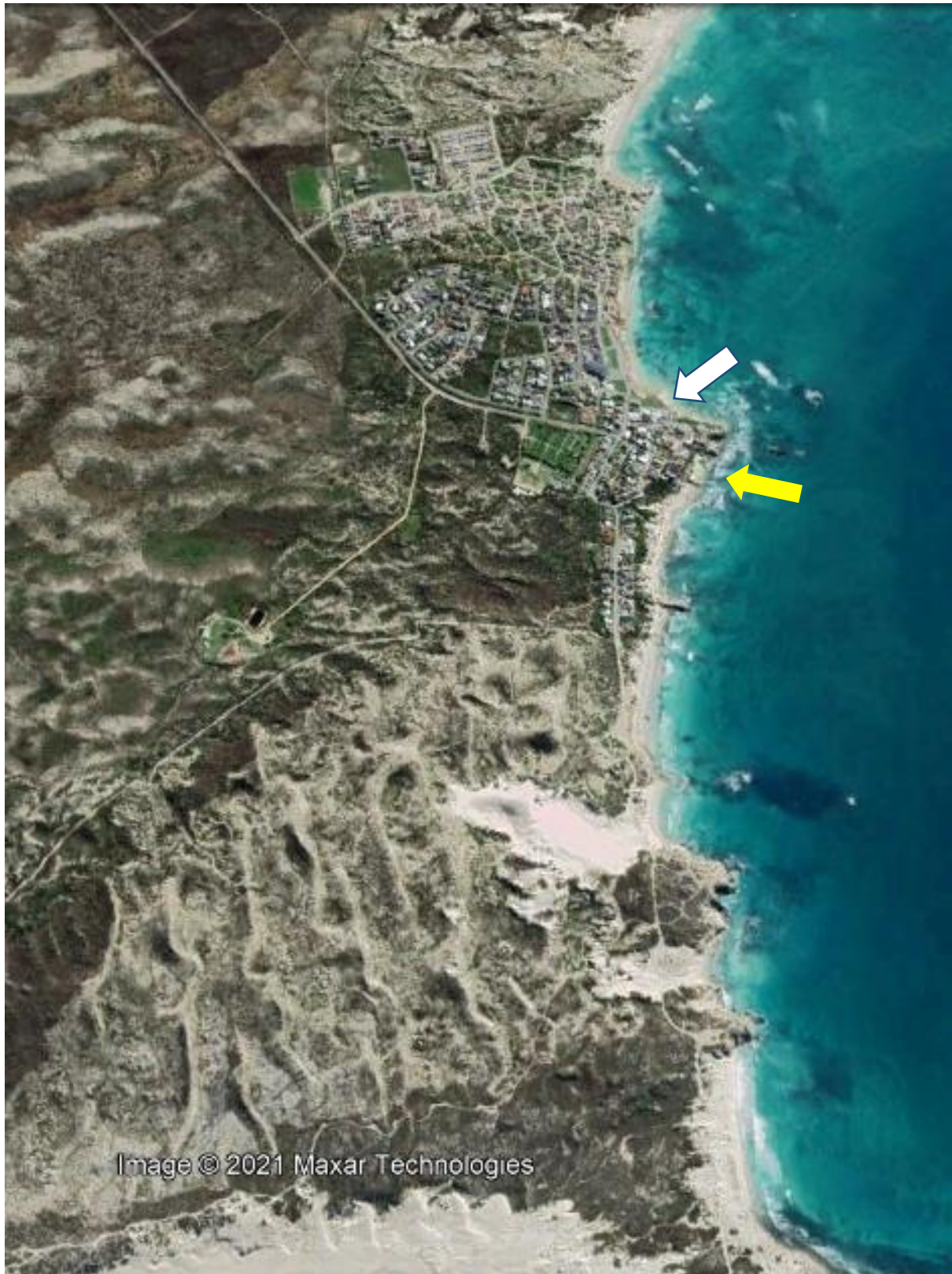


Image © 2021 Maxar Technologies

Figure 2. Satellite image of Arniston East Shore, showing the locations of the pinnacles. White arrow points to the karst pinnacles (yellow arrow points to the dissolution pillars).



Figure 3. Satellite image of a section of the Arniston East Shore, showing the locations of pinnacles. White arrow points to the karst pinnacles (yellow arrow points to the dissolution pillars).

The Karst pinnacles were formed within a pocket of the upper, semi-consolidated part of the Waenhuiskrans Formation (Figures 4 to 8).



Figure 4. The karst pinnacle cluster at Arniston (arrow). View to the west. The feature at the foreground is an isolated dissolution pillar (see Field Note on dissolution features).



Figure 5. The karst pinnacle cluster at Arniston (arrow). Note the huge chunks of the disintegrated calcrete layer (which covers the consolidated part of the Waenhuiskrans Formation) above the pinnacles.



Figure 6. Top and bottom - the karst pinnacle cluster at Arniston.



Figure 7. Top and bottom - the karst pinnacle cluster at Arniston.



Figure 8. Top and bottom – views from above on the karst pinnacle cluster at Arniston.