

U. SHORES

Field Note U12a2. Archaeology - Fish traps – Suiderstrand

There are twenty-eight sites of intertidal fish trap clusters along the Cape South Coast, eight of which are along the shores of the Study Area. They are (from southwest to northeast): Suiderstrand, Rasperpunt, Cape Agulhas, Struis Bay, Struis Point, Arniston, Ryspunt, Skipskop and Breede River, containing in total >100 traps of all shapes and sizes (Figure 1). This Field Note is about the trap cluster at Suiderstrand (Figures 2 and 3).



Figure 1. Satellite image (rotated) showing the locations of fish trap clusters in the Study Area. Arrow points to Suiderstrand.

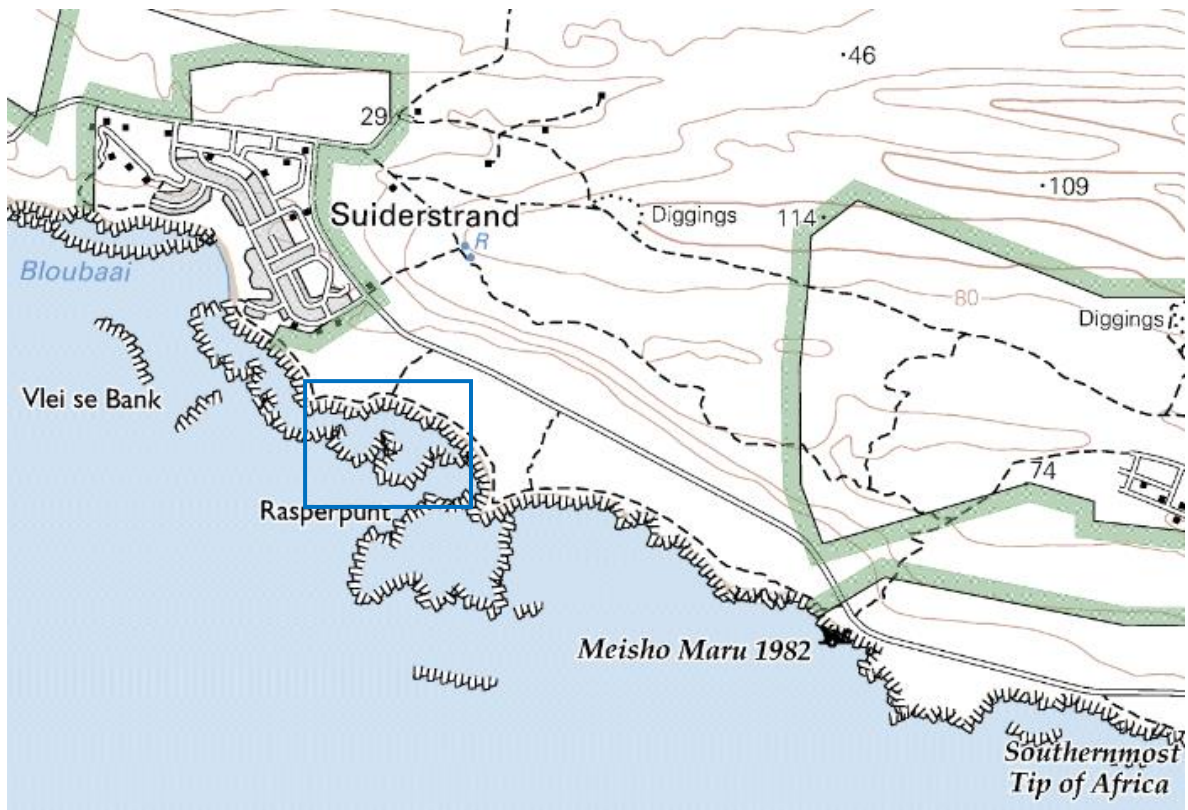


Figure 2. Topography map of the Suiderstrand area. Box enlarged in Figure 4.

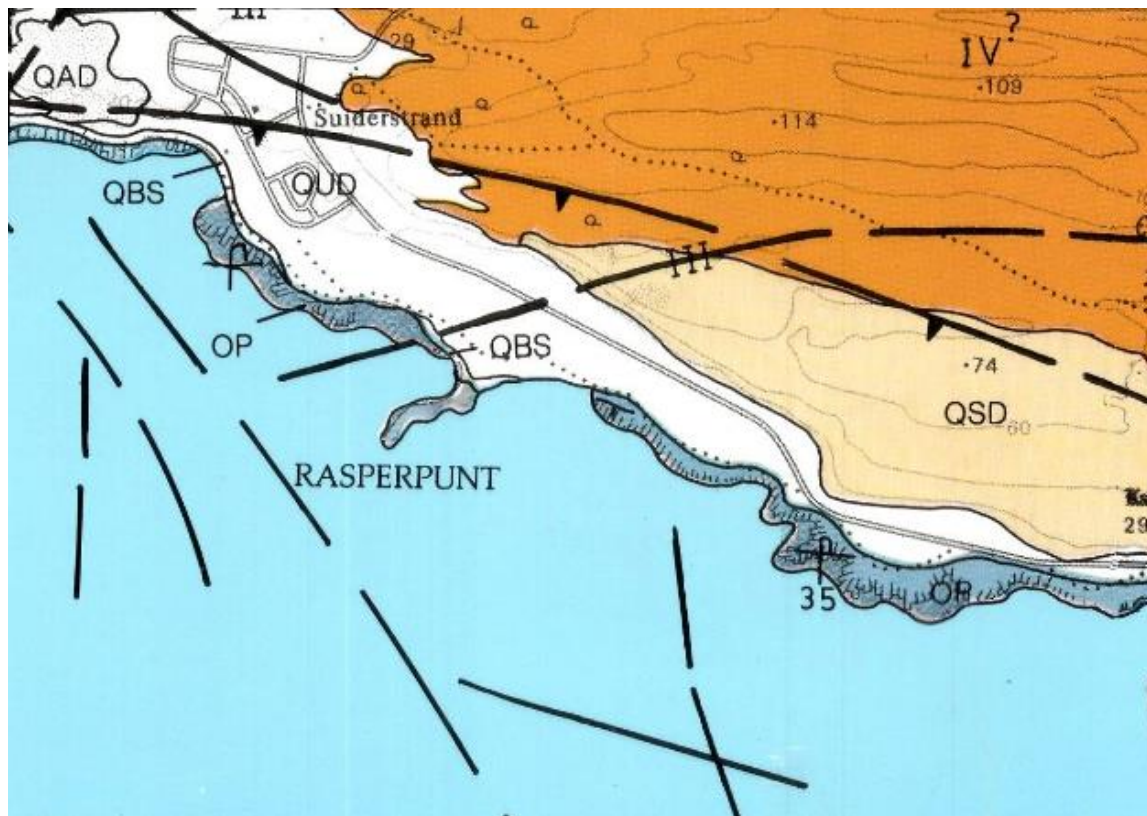


Figure 3. Geology map (MAG Andreoli, 1988) of the Suiderstrand area. The rocky belt around the shore consists of the TMG Peninsula Formation.



Figure 4. Topography map of Suiderstrand fish trap area.

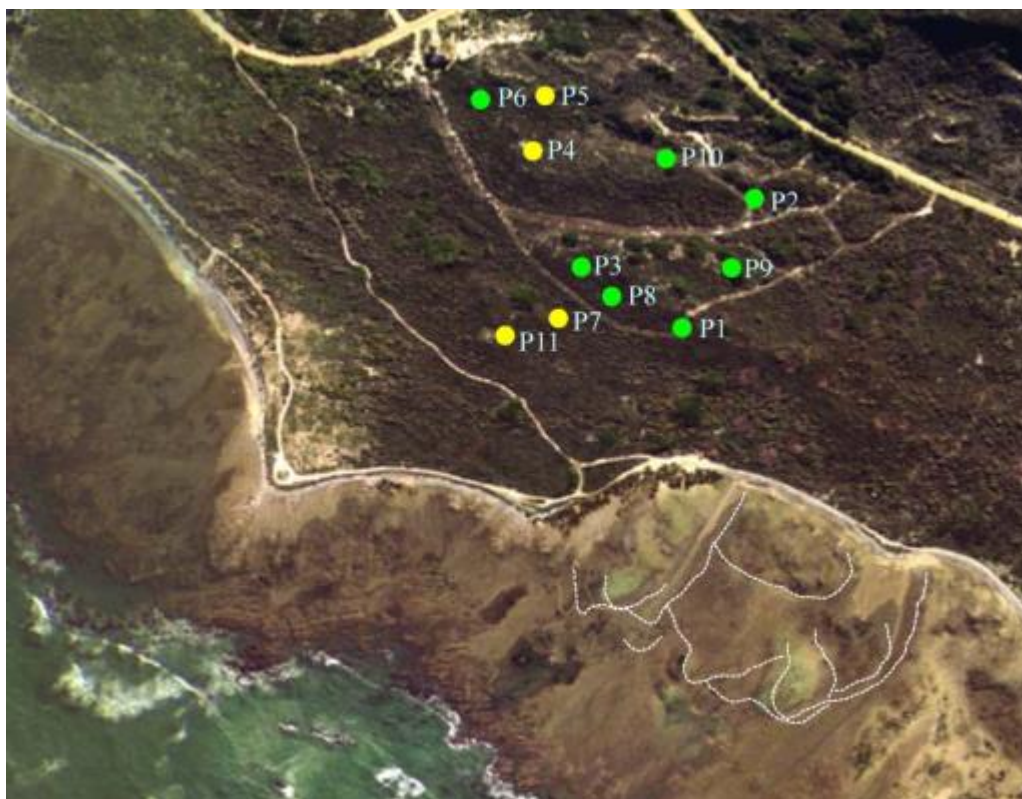


Figure 5. Satellite image of the Suiderstrand trap cluster area. Yellow and green dots mark the locations of shell middens from later Stone-Age on the Paapkuil Fontein Farm, which were investigated by PJ Hine to prove that the nearby traps are not precolonial.

Source: PJ Hine MSc Thesis, 2008.

The traps, built between two pebble spits, can be seen through the water in high tide and better recognised at low tide (Figures 6 and 7).

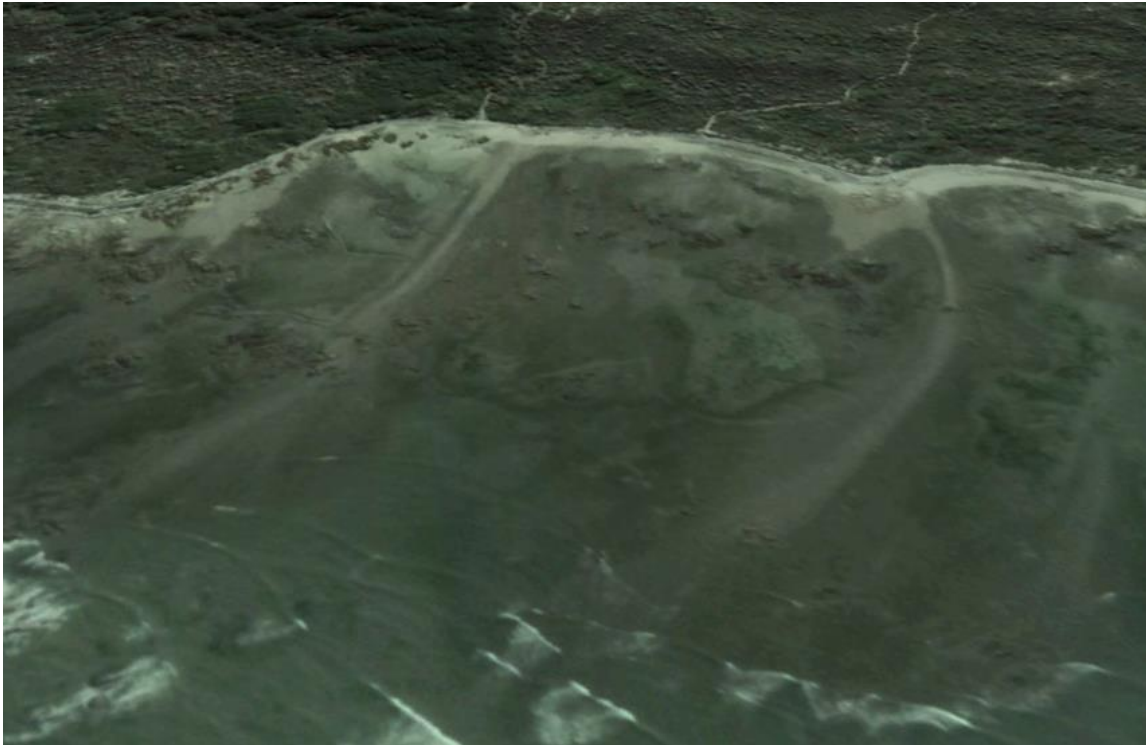


Figure 6. Recent Satellite images of Suiderstrand fish trap area. Top – at high tide; bottom – at low tide. Yellow arrows point to some traps; white arrows point to pebble spits.



Figure 7. Delineation of fish traps based on photography available 15 to 10 years ago.
Top – from an aerial photograph (LV Kemp MSc Thesis, 2006); bottom – from a satellite image
(PJ Hine MSc Thesis, 2008).

A study of this cluster of traps, using recent satellite images (like the ones shown in Figure 4), GPS mapping and ground truthing will be conducted at a later stage.