

**N. DE HOOP VLEI GORGE**

**Desk Note N8d. Hydrology – De Hoop Vlei water level – 1960 to 2020**



**View on the Droekloof, on the western side of the De Hoop Vlei.**

**N. DE HOOP VLEI GORGE**

**Desk Note N8d. Hydrology – De Hoop Vlei water level – 1960 to 2020**

From 1960 onwards the De Hoop Vlei water level is monitored by the Department of Water and Sanitation at the hydrometry station on the southeast shore of the vlei, close the Die Mond (Figures 1, 2 and 3).



**Figure 1. Satellite image of the southern part of the De Hoop Vlei. Arrow points on the location of the hydrometry station. Boxed area enlarged in Figure 2.**



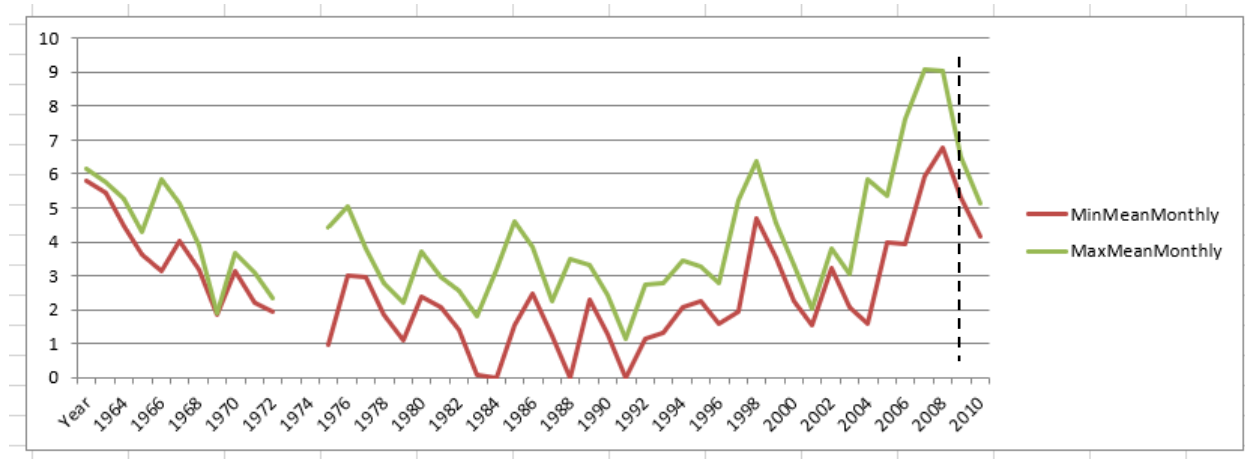


**Figure 2. Satellite image of a section of the east shore of De Hoop Vlei. Arrow points on the location of the hydrometry station.**



**Figure 3. The hydrometer on the southeast shore of the De Hoop Vlei. The south shore of Die Mond can be seen at a distance.**

The vlei water level fluctuations since 1960 are presented in Figure 4. The water level is dropping since 2013, and in August 2020 it is as low as it was 30-40 years ago (1983, 1988 and 1992), leaving only little water along the shore between the hotel and Die Mond and in Die Mond.



### Department of Water and Sanitation

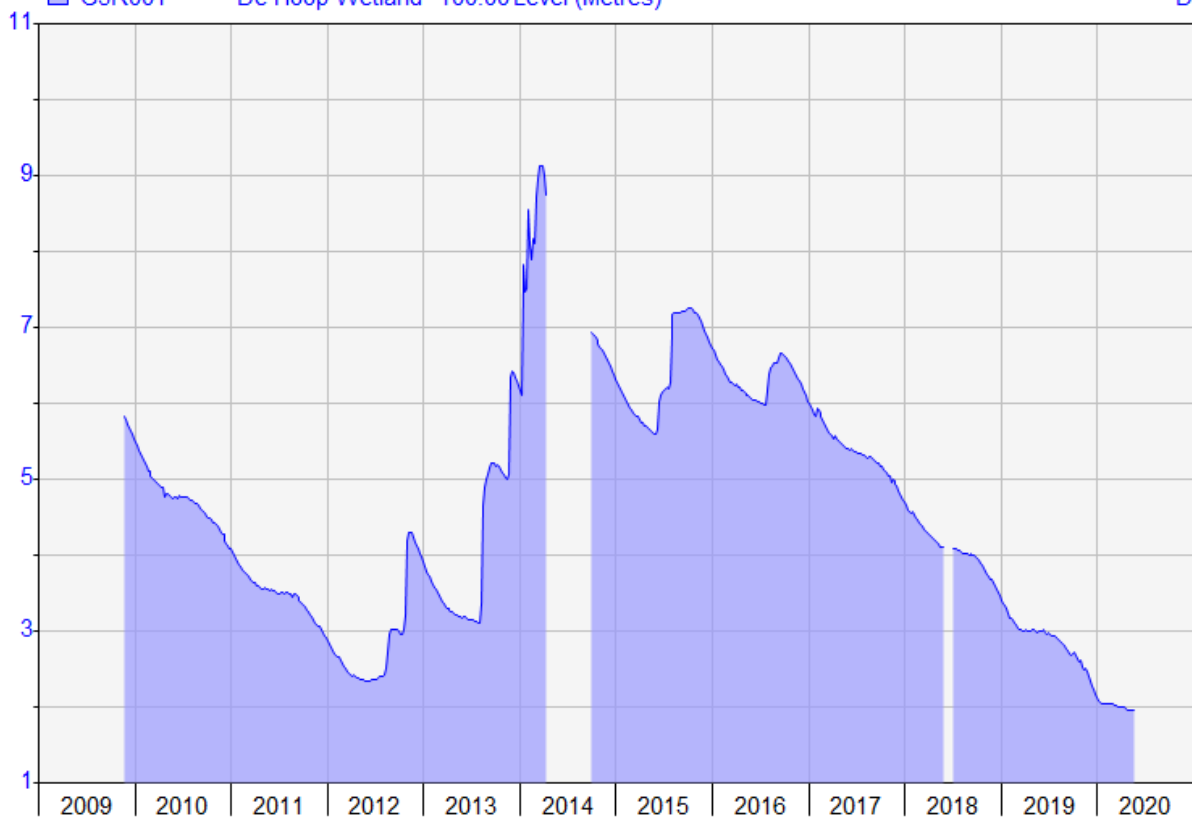
HYPLOT V134 Output 23/07/2020

Period 12 Year 01/01/2009 to 01/01/2021

2009-20

■ G5R001 De Hoop Wetland 100.00 Level (Metres)

D



**Figure 4. De Hoop Vlei water levels 1960 to 2020. Top – 1960 to 2010; dashed line indicates the start of the bottom graph. Bottom – 2010 to 2020. The water level in the beginning of 2014 was the highest in the last 60 years. Between 2014 and 2020 the water level dropped ~1 m a year on average.**

Courtesy Department of Water Affairs and Sanitation, Hydrometry, Heatlievale, Worcester, 6849.