

N. DE HOOP VLEI GORGE

Field Note N9b. Archaeology - Ruins



Eselkamp ruins.

N. DE HOOP VLEI GORGE

Field Note N9b. Archaeology - Ruins

Historical cottages around the gorge are located at Eselkamp, in the outlet of Eselkloof, and south of the outlet of Wasdam se Kloof (Figure 1).

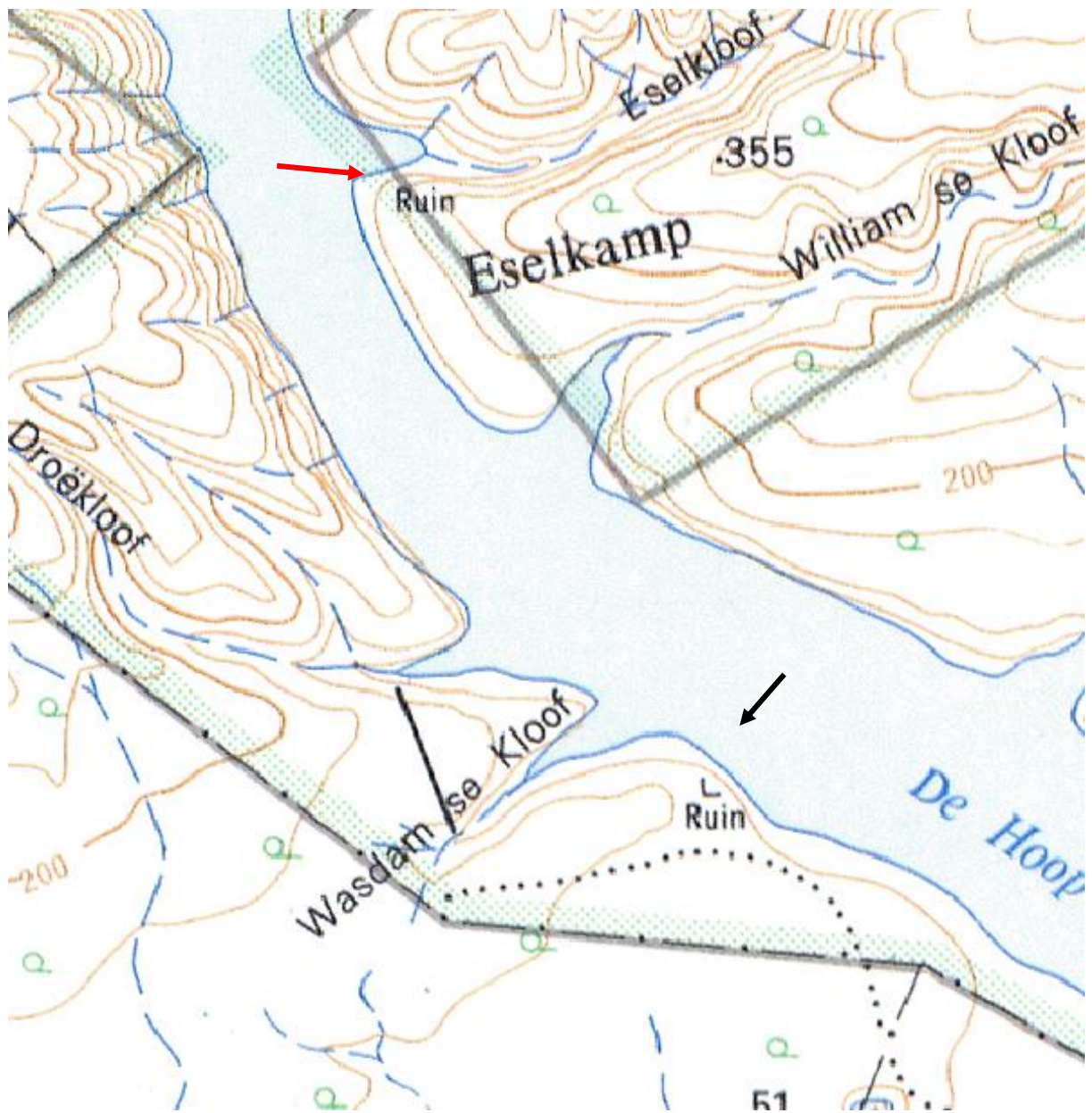


Figure 1. Topography map of a section of the gorge. The ruins are indicated by arrows: red – Eselkamp ruins; black - Wasdam ruins.

The Eselkamp ruins are located on a gently sloping terrace, on the south side of Eselkloof outlet (Figure 2).



Figure 2. Satellite images of the Eselkamp ruins (yellow arrow) at the outlet of Eselkloof (white arrow). Top – the vlei is full; bottom – the vlei is dry. Note the wall across the gorge south of the Eselkloof outlet (red arrow); see Field Note on roads, dykes and stonewalls.

The Eselkamp ruins are situated about 12 m above the vlei floor (Figures 3 and 4).



Figure 3. View to the south on the location of the Eselkamp ruins (arrow).



Figure 4. View to the north from the Eselkamp ruins. The wall across the gorge, north of the Eselkloof outlet, is clearly seen (arrow).

The Eselkamp ruins are obscured by thick bushes (Figure 5).



Figure 5. Eselkamp ruins.

The Wasdam se Kloof ruins are located some 400 m south of the outlet of the Wasdam se Kloof (Figures 6 to 10).



Figure 6. Satellite images of the Wasdam se Kloof ruins (yellow arrows). Top – the vlei is full; bottom – the vlei is dry.



Figure 7. The ruins south of Wasdam se Kloof. View to the southeast.



Figure 8. The ruins south of Wasdam se Kloof. View to the southeast.



Figure 9. The ruins south of Wasdam se Kloof. View to the north.



Figure 10. The ruins south of Wasdam se Kloof. View to the north.

The author did not find any information on the Eselkamp and the Wasdam ruins.